

## LY96 RABBIT PAB

**Cat.#:** S211017

**Product Name:** Anti-LY96 Rabbit Polyclonal Antibody

**Synonyms:** MD2; MD-2; ly-96; ESOP-1

**UNIPROT ID:** Q9Y6Y9 (Gene Accession - BC020690 )

**Background:** This gene encodes a protein which associates with toll-like receptor 4 on the cell surface and confers responsiveness to lipopolysaccharide (LPS), thus providing a link between the receptor and LPS signaling. Studies of the mouse ortholog suggest that this gene may be involved in endotoxin neutralization. Alternative splicing results in multiple transcript variants encoding different isoforms.

**Immunogen:** Fusion protein of human LY96

**Applications:** ELISA, WB, IHC

**Recommended Dilutions:** IHC: 25-100;WB: 500-2000;ELISA: 1000-2000

**Host Species:** Rabbit

**Clonality:** Rabbit Polyclonal

**Isotype:** Immunogen-specific rabbit IgG

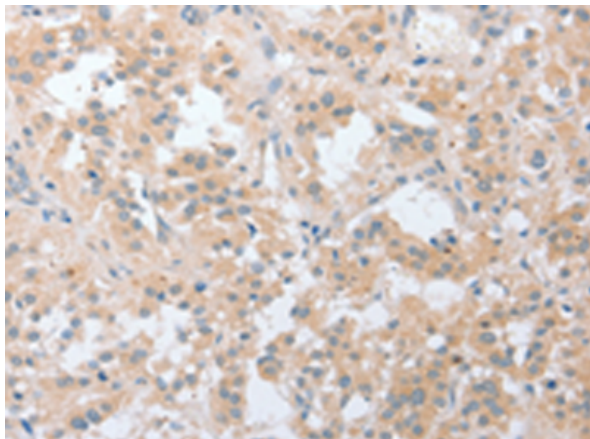
**Purification:** Antigen affinity purification

**Species Reactivity:** Human, Mouse

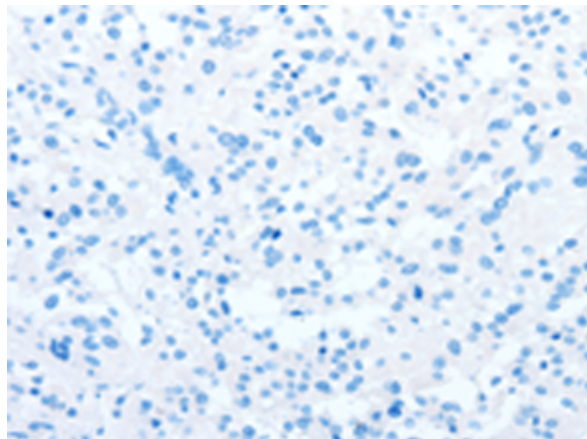
**Constituents:** PBS (without Mg<sup>2+</sup> and Ca<sup>2+</sup>), pH 7.4, 150 mM NaCl, 0.05% Sodium Azide and 40% glycerol

**Research Areas:** Immunology

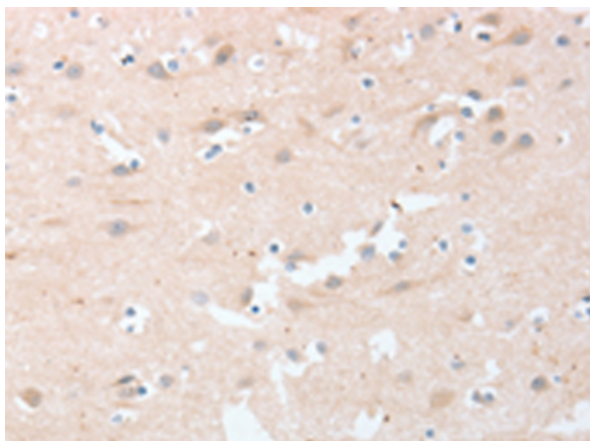
**Storage & Shipping:** Store at -20°C. Avoid repeated freezing and thawing



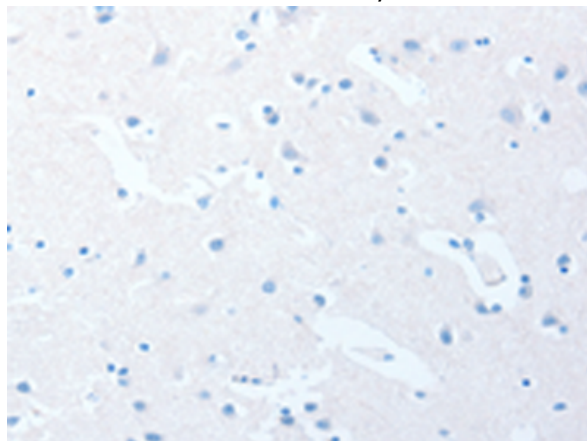
Immunohistochemistry analysis of paraffin embedded Human thyroid cancer tissue using 211017(LY96 Antibody) at a dilution of 1/20(Cytoplasm).



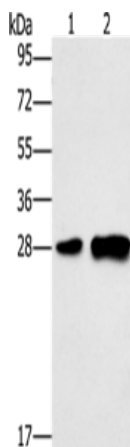
In comparison with the IHC on the left, the same paraffin-embedded Human thyroid cancer tissue is first treated with the fusion protein and then with 211017(Anti-LY96 Antibody) at dilution 1/20.



The image on the left is immunohistochemistry of paraffin-embedded Human brain tissue using 211017(Anti-LY96 Antibody) at a dilution of 1/20.



In comparison with the IHC on the left, the same paraffin-embedded Human brain tissue is first treated with fusion protein and then with D122065(Anti-LY96 Antibody) at dilution 1/20.



Gel: 10%SDS-PAGE, Lysate: 40 µg;  
Lane 1-2: Mouse liver tissue, 231 cells;  
Primary antibody: 211017(LY96 Antibody) at dilution 1/500;  
Secondary antibody: Goat anti rabbit IgG at 1/8000 dilution;  
Exposure time: 1 minute



# Product Description

Pioneering GTPase and Oncogene Product Development since 2010

---