

LY75 RABBIT PAB

Cat.#: S219737

Product Name: Anti-LY75 Rabbit Polyclonal Antibody

Synonyms: CD205; LY-75; CLEC13B; DEC-205; GP200-MR6

UNIPROT ID: O60449 (Gene Accession - NP_002340)

Background: Acts as an endocytic receptor to direct captured antigens from the extracellular space to a specialized antigen-processing compartment (By similarity). Causes reduced proliferation of B-lymphocytes.

Immunogen: Synthetic peptide of human LY75

Applications: ELISA, IHC

Recommended Dilutions: IHC: 25-50; ELISA: 5000-10000

Host Species: Rabbit

Clonality: Rabbit Polyclonal

Isotype: Immunogen-specific rabbit IgG

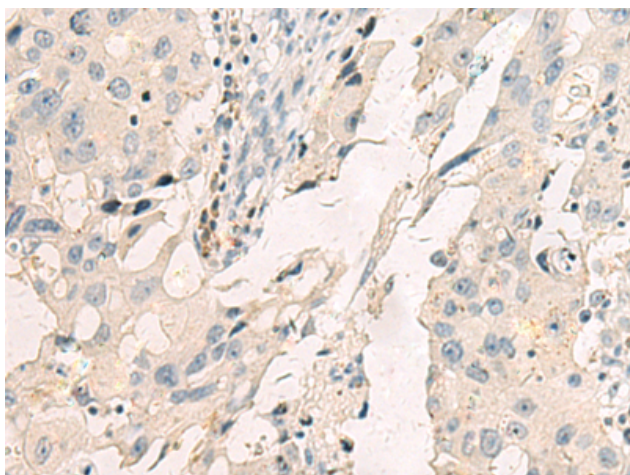
Purification: Antigen affinity purification

Species Reactivity: Human

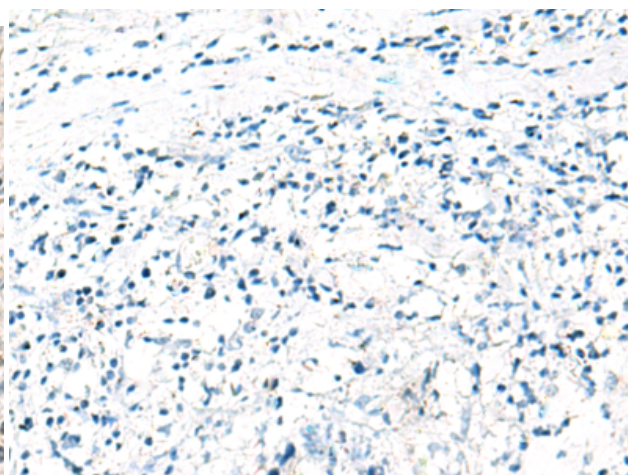
Constituents: PBS (without Mg²⁺ and Ca²⁺), pH 7.4, 150 mM NaCl, 0.05% Sodium Azide and 40% glycerol

Research Areas: Immunology

Storage & Shipping: Store at -20°C. Avoid repeated freezing and thawing



Immunohistochemistry analysis of paraffin embedded Human breast cancer tissue using 219737(LY75 Antibody) at a dilution of 1/35(Cytoplasm).



In comparison with the IHC on the left, the same paraffin-embedded Human breast cancer tissue is first treated with the synthetic peptide and then with 219737(Anti-LY75 Antibody) at dilution 1/35.