

## LUMICAN RABBIT MAB

**Cat.#:** N262479

**Product Name:** Anti-Lumican Rabbit Monoclonal Antibody

**Synonyms:** LDC; LUM; Lumican; SLRR2D

**UNIPROT ID:** P51884

**Background:** Belongs to the small leucine-rich proteoglycan (SLRP) family. SLRP class II subfamily. Contains 11 LRR (leucine-rich) repeats. Contains 1 LRRNT domain.

**Immunogen:** A synthetic peptide of human Lumican

**Applications:** WB,IHC-F,IHC-P,ICC/IF

**Recommended Dilutions:** WB: 1/500-1/1000 IHC: 1/50-1/100 IF: 1/50-1/200

**Host Species:** Rabbit

**Clonality:** Rabbit Monoclonal

**Clone ID:** R02-7F6

**MW:** Calculated MW: 38 kDa; Observed MW: 60 kDa

**Isotype:** IgG

**Purification:** Affinity Purified

**Species Reactivity:** Human,Mouse,Rat

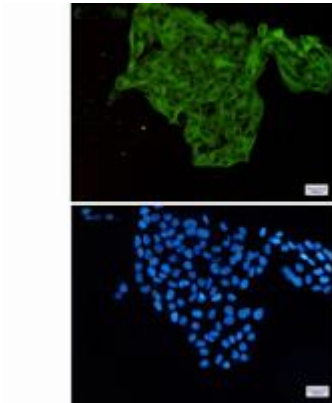
**Conjugation:** Unconjugated

**Modification:** Unmodified

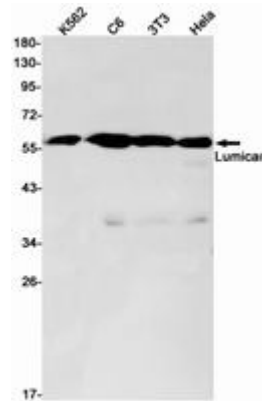
**Constituents:** PBS (without Mg<sup>2+</sup> and Ca<sup>2+</sup>), pH 7.3 containing 50% glycerol, 0.5% BSA and 0.02% sodium azide

**Research Areas:** Cancer

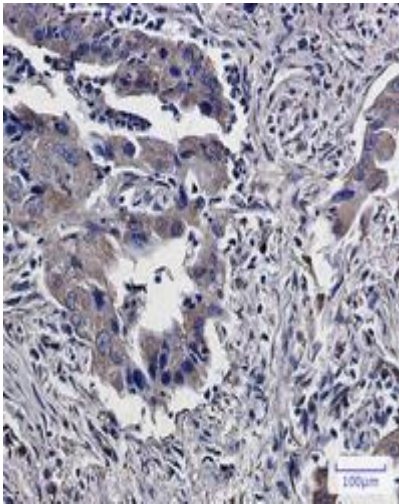
**Storage & Shipping:** Store at -20°C. Avoid repeated freezing and thawing



Immunocytochemistry analysis of Lumican (green) in Hela using Lumican antibody, and DAPI (blue)



Western blot analysis of Lumican in K562, C6, 3T3, Hela lysates using Lumican antibody.



Immunohistochemistry analysis of paraffin-embedded Human lung cancer using Lumican antibody. High-pressure and temperature Sodium Citrate pH 6.0 was used for antigen retrieval.