

## LTA4H RABBIT PAB

**Cat.#:** S217582

**Product Name:** Anti-LTA4H Rabbit Polyclonal Antibody

**Synonyms:**

**UNIPROT ID:** P09960 (Gene Accession - BC032528 )

**Background:** LTA4H (Leukotriene A4-hydrolase ) is a Zn<sup>2+</sup>-containing enzyme with both epoxide hydrolase and aminopeptidase activity. As an epoxide hydrolase, LTA4H catalyzes the hydration of LTA4 to leukotriene B4 (LTB4, 5S,12R-dihydroxy-6,14-cis-8,10-trans-eicosatetraenoic acid), a potent lipid chemoattractant that influences inflammation, immune responses, and host defense against infection. As an aminopeptidase, LTA4H catalyzes the cleavage of amides of para-nitroaniline. The human LTA4H gene encodes a 610 amino acid protein.

**Immunogen:** Fusion protein of human LTA4H

**Applications:** ELISA, WB, IHC

**Recommended Dilutions:** IHC: 25-100;WB: 200-1000;ELISA: 1000-2000

**Host Species:** Rabbit

**Clonality:** Rabbit Polyclonal

**Isotype:** Immunogen-specific rabbit IgG

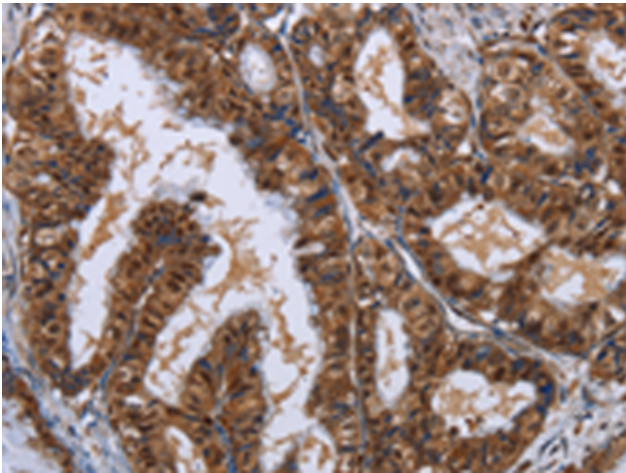
**Purification:** Antigen affinity purification

**Species Reactivity:** Human, Mouse, Rat

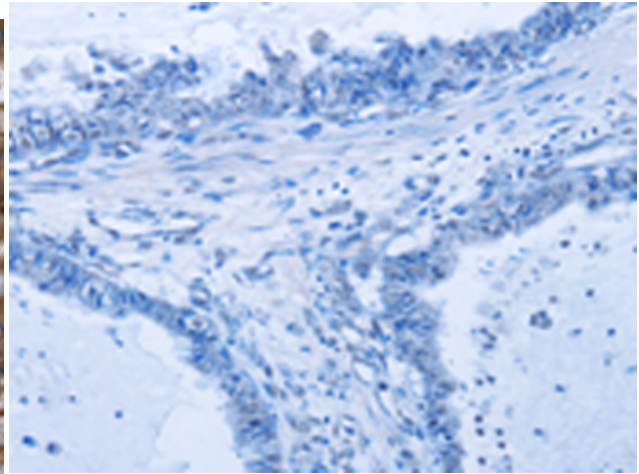
**Constituents:** PBS (without Mg<sup>2+</sup> and Ca<sup>2+</sup>), pH 7.4, 150 mM NaCl, 0.05% Sodium Azide and 40% glycerol

**Research Areas:** Cancer, Metabolism, Immunology

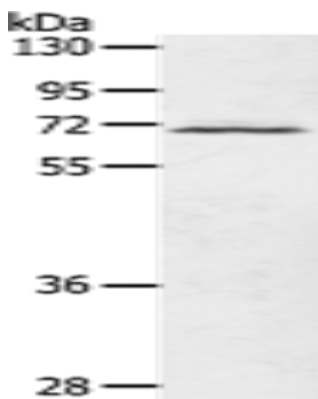
**Storage & Shipping:** Store at -20°C. Avoid repeated freezing and thawing



Immunohistochemistry analysis of paraffin embedded Human esophagus cancer tissue using 217582(LTA4H Antibody) at a dilution of 1/30(Cytoplasm and Nucleus).



In comparison with the IHC on the left, the same paraffin-embedded Human esophagus cancer tissue is first treated with the fusion protein and then with 217582(Anti-LTA4H Antibody) at dilution 1/30.



Gel: 8%SDS-PAGE, Lysate: 40 µg;  
Lane: Human fetal brain tissue;  
Primary antibody: 217582(LTA4H Antibody) at dilution 1/500;  
Secondary antibody: Goat anti rabbit IgG at 1/8000 dilution;  
Exposure time: 2 minutes