

## LRRC45 RABBIT PAB

**Cat.#:** S218201

**Product Name:** Anti-LRRC45 Rabbit Polyclonal Antibody

**Synonyms:**

**UNIPROT ID:** Q96CN5 (Gene Accession - BC014109 )

**Background:** Component of the proteinaceous fiber-like linker between two centrioles, required for centrosome cohesion.

**Immunogen:** Fusion protein of human LRRC45

**Applications:** ELISA, WB, IHC

**Recommended Dilutions:** IHC: 100-300;WB: 500-2000;ELISA: 5000-10000

**Host Species:** Rabbit

**Clonality:** Rabbit Polyclonal

**Isotype:** Immunogen-specific rabbit IgG

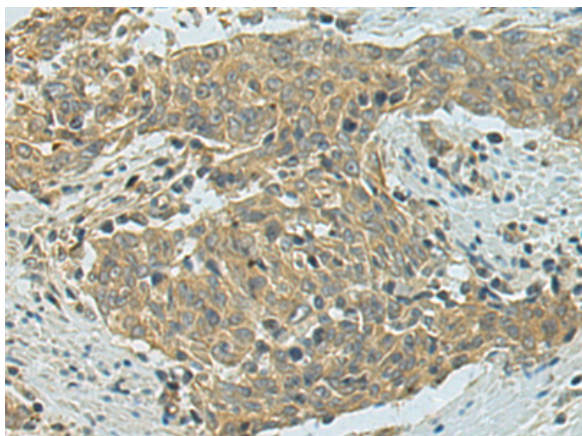
**Purification:** Antigen affinity purification

**Species Reactivity:** Human, Mouse

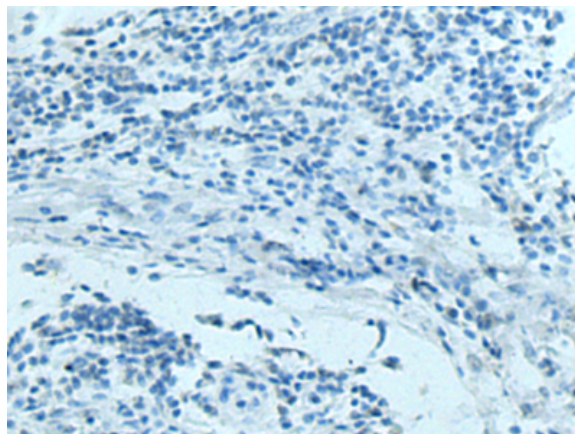
**Constituents:** PBS (without Mg<sup>2+</sup> and Ca<sup>2+</sup>), pH 7.4, 150 mM NaCl, 0.05% Sodium Azide and 40% glycerol

**Research Areas:** Cell Biology

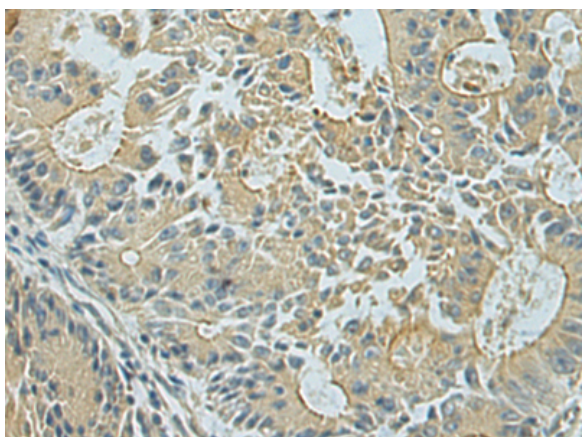
**Storage & Shipping:** Store at -20°C. Avoid repeated freezing and thawing



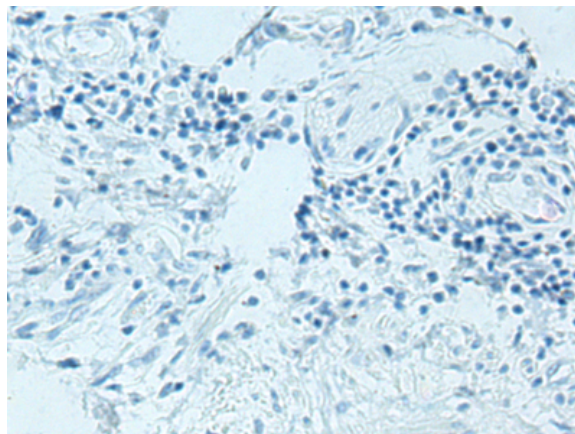
Immunohistochemistry analysis of paraffin embedded Human esophagus cancer tissue using 218201(LRRC45 Antibody) at a dilution of 1/130(Cytoplasm).



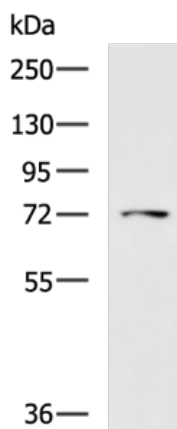
In comparison with the IHC on the left, the same paraffin-embedded Human esophagus cancer tissue is first treated with the fusion protein and then with 218201(Anti-LRRC45 Antibody) at dilution 1/130.



The image on the left is immunohistochemistry of paraffin-embedded Human colorectal cancer tissue using 218201(Anti-LRRC45 Antibody) at a dilution of 1/130.



In comparison with the IHC on the left, the same paraffin-embedded Human colorectal cancer tissue is first treated with fusion protein and then with D223931(Anti-LRRC45 Antibody) at dilution 1/130.



Gel: 8%SDS-PAGE, Lysate: 40 µg;  
 Lane: HepG2 cell lysate;  
 Primary antibody: 218201(LRRC45 Antibody) at dilution 1/1000;  
 Secondary antibody: HRP-conjugated Goat anti rabbit IgG at 1/5000 dilution;  
 Exposure time: 2 minutes



# Product Description

Pioneering GTPase and Oncogene Product Development since 2010

---