

## LRRC19 RABBIT PAB

**Cat.#:** S218099

**Product Name:** Anti-LRRC19 Rabbit Polyclonal Antibody

**Synonyms:**

**UNIPROT ID:** Q9H756 (Gene Accession - BC126156 )

**Background:** LRRC19 is a member of the extracellular leucine-rich repeat superfamily, a family of proteins that are thought to have diverse functions such as cell adhesion, signaling, and innate immunity. LRRC19 is closely related to the Toll-like receptors (TLRs), especially TLR3. LRRC19 does not contain a cytoplasmic Toll/IL-1 receptor (TIR) domain, but can activate NF-kappaB and induce the production of proinflammatory cytokines after stimulation with the TLR3 and other TLR ligands, suggesting that LRRC19 may play a role in the recognition and the response to certain pathogenic microorganisms. LRRC19 has also been suggested to be a potential biomarker for pancreatic tumor sensitivity to the anti-cancer, small molecule Src inhibitor AZD0530.

**Immunogen:** Fusion protein of human LRRC19

**Applications:** ELISA, IHC

**Recommended Dilutions:** IHC: 25-100; ELISA: 5000-10000

**Host Species:** Rabbit

**Clonality:** Rabbit Polyclonal

**Isotype:** Immunogen-specific rabbit IgG

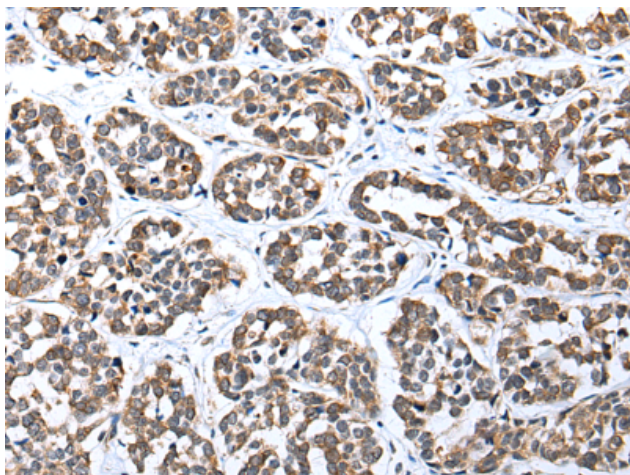
**Purification:** Antigen affinity purification

**Species Reactivity:** Human

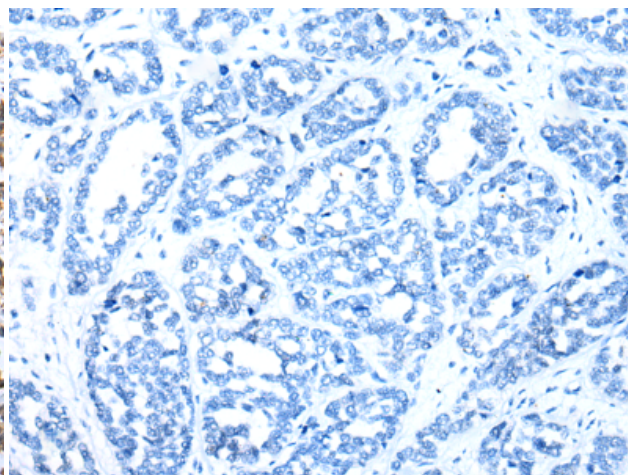
**Constituents:** PBS (without Mg<sup>2+</sup> and Ca<sup>2+</sup>), pH 7.4, 150 mM NaCl, 0.05% Sodium Azide and 40% glycerol

**Research Areas:** Signal Transduction, Epigenetics and Nuclear Signaling

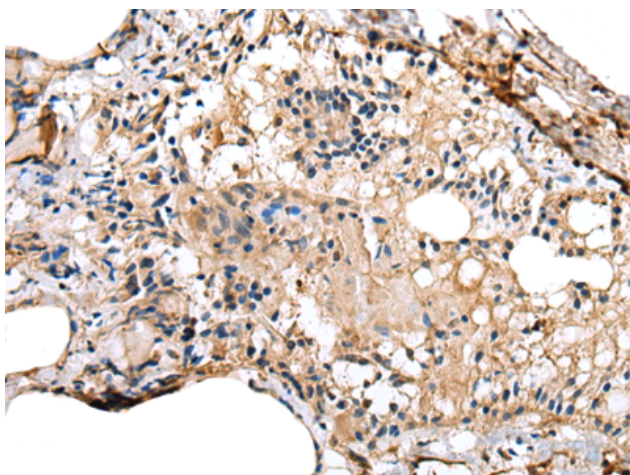
**Storage & Shipping:** Store at -20°C. Avoid repeated freezing and thawing



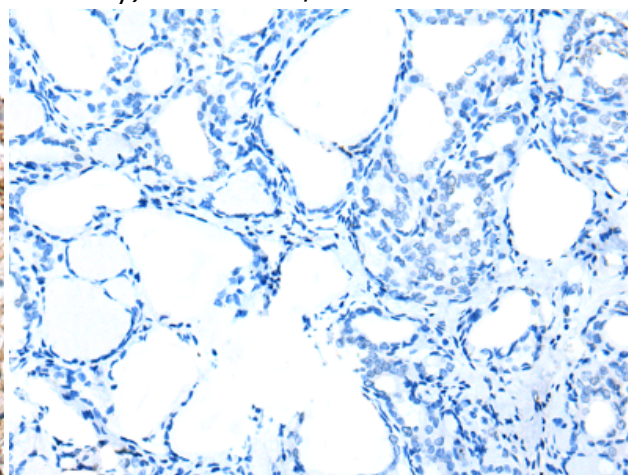
Immunohistochemistry analysis of paraffin embedded Human esophagus cancer tissue using 218099(LRRC19 Antibody) at a dilution of 1/25(Cytoplasm).



In comparison with the IHC on the left, the same paraffin-embedded Human esophagus cancer tissue is first treated with the fusion protein and then with 218099(Anti-LRRC19 Antibody) at dilution 1/25.



The image on the left is immunohistochemistry of paraffin-embedded Human thyroid cancer tissue using 218099(Anti-LRRC19 Antibody) at a dilution of 1/25.



In comparison with the IHC on the left, the same paraffin-embedded Human thyroid cancer tissue is first treated with fusion protein and then with D223707(Anti-LRRC19 Antibody) at dilution 1/25.