

## LRRC15 RABBIT PAB

**Cat.#:** S217580

**Product Name:** Anti-LRRC15 Rabbit Polyclonal Antibody

**Synonyms:** LIB

**UNIPROT ID:** Q8TF66 (Gene Accession - BC101065 )

**Background:** Enables collagen binding activity; fibronectin binding activity; and laminin binding activity. Involved in negative regulation of protein localization to plasma membrane; positive regulation of cell migration; and receptor-mediated virion attachment to host cell. Located in extracellular exosome. Colocalizes with collagen-containing extracellular matrix.

**Immunogen:** Fusion protein of human LRRC15

**Applications:** ELISA, IHC

**Recommended Dilutions:** IHC: 50-100; ELISA: 5000-10000

**Host Species:** Rabbit

**Clonality:** Rabbit Polyclonal

**Isotype:** Immunogen-specific rabbit IgG

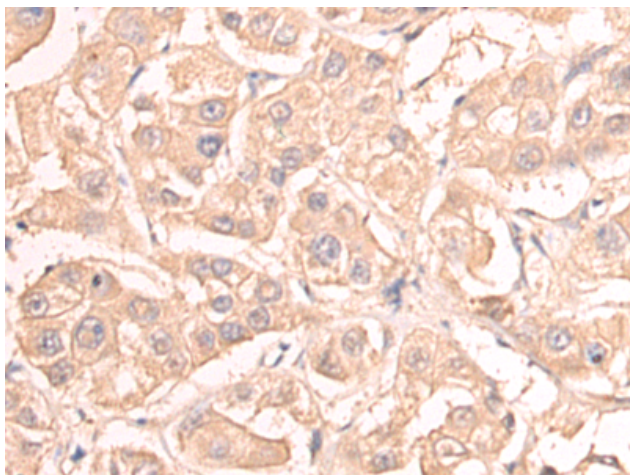
**Purification:** Antigen affinity purification

**Species Reactivity:** Human, Mouse, Rat

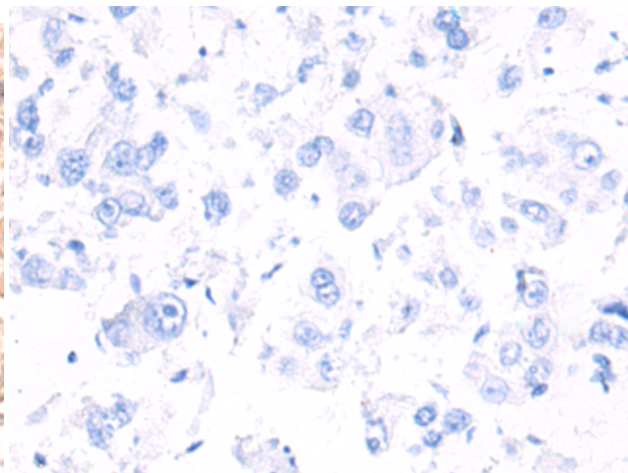
**Constituents:** PBS (without Mg<sup>2+</sup> and Ca<sup>2+</sup>), pH 7.4, 150 mM NaCl, 0.05% Sodium Azide and 40% glycerol

**Research Areas:** Cancer, Neuroscience

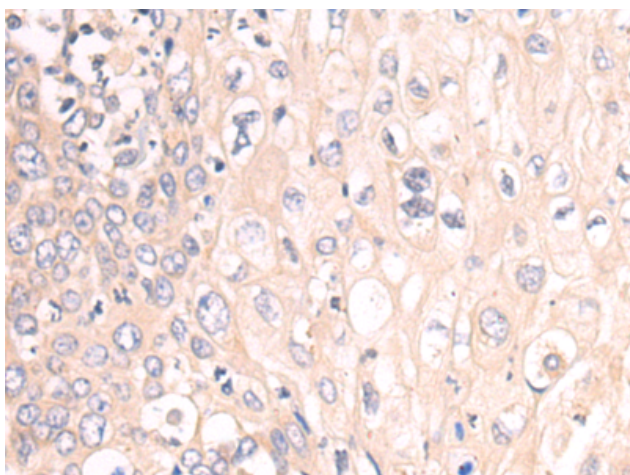
**Storage & Shipping:** Store at -20°C. Avoid repeated freezing and thawing



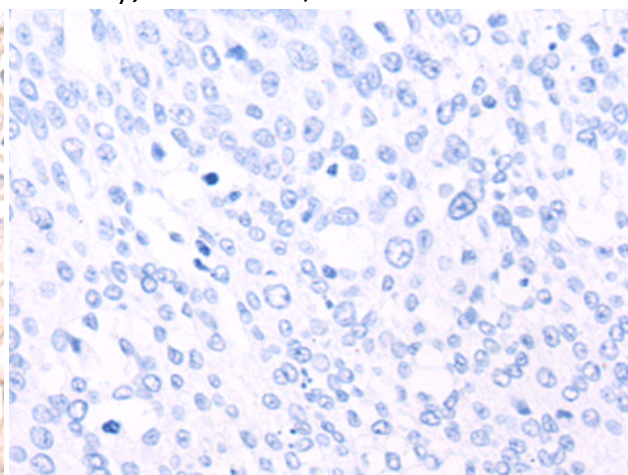
Immunohistochemistry analysis of paraffin embedded Human colorectal cancer tissue using 217580(LRRC15 Antibody) at a dilution of 1/50(Cytoplasm and Cell membrane).



In comparison with the IHC on the left, the same paraffin-embedded Human colorectal cancer tissue is first treated with the fusion protein and then with 217580(Anti-LRRC15 Antibody) at dilution 1/50.



The image on the left is immunohistochemistry of paraffin-embedded Human cervical cancer tissue using 217580(Anti-LRRC15 Antibody) at a dilution of 1/50.



In comparison with the IHC on the left, the same paraffin-embedded Human cervical cancer tissue is first treated with fusion protein and then with D222627(Anti-LRRC15 Antibody) at dilution 1/50.