

LRIG1 RABBIT PAB

Cat.#: S219894

Product Name: Anti-LRIG1 Rabbit Polyclonal Antibody

Synonyms: LIG1; LIG-1

UNIPROT ID: Q96JAI (Gene Accession - NP_056356)

Background: Predicted to act upstream of or within several processes, including innervation; otolith morphogenesis; and sensory perception of sound. Predicted to be located in plasma membrane. Predicted to be active in extracellular matrix and extracellular space.

Immunogen: Synthetic peptide of human LRIG1

Applications: ELISA, WB, IHC

Recommended Dilutions: IHC: 100-300;WB: 1000-5000;ELISA: 5000-10000

Host Species: Rabbit

Clonality: Rabbit Polyclonal

Isotype: Immunogen-specific rabbit IgG

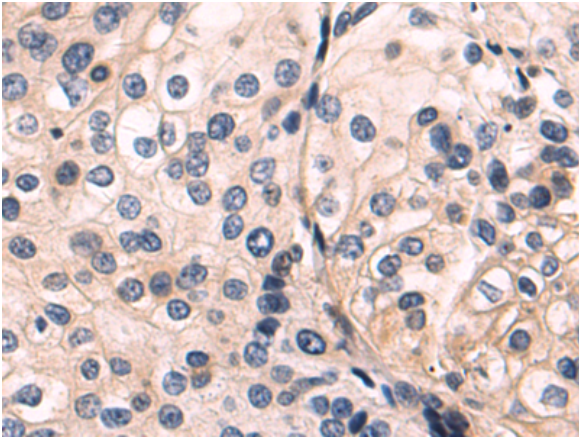
Purification: Antigen affinity purification

Species Reactivity: Human, Mouse

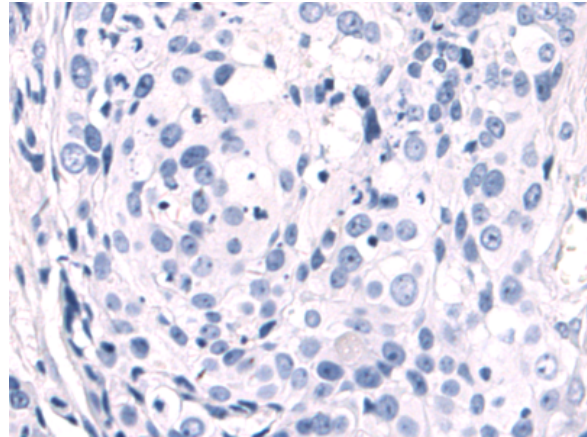
Constituents: PBS (without Mg²⁺ and Ca²⁺), pH 7.4, 150 mM NaCl, 0.05% Sodium Azide and 40% glycerol

Research Areas: Cancer

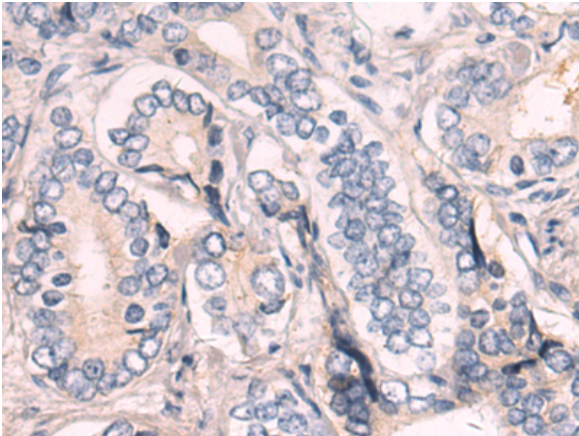
Storage & Shipping: Store at -20°C. Avoid repeated freezing and thawing



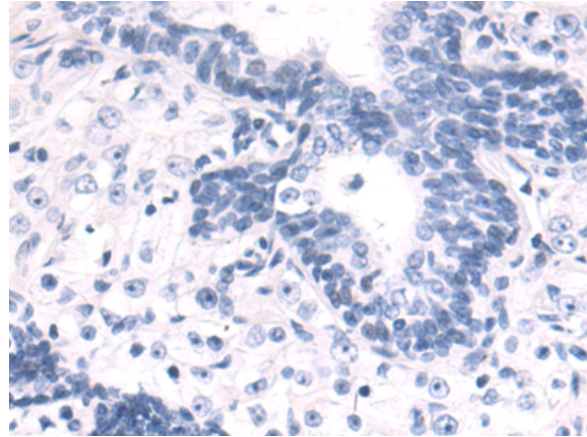
Immunohistochemistry analysis of paraffin embedded Human cervical cancer tissue using 219894(LRIG1 Antibody) at a dilution of 1/95(Cytoplasm).



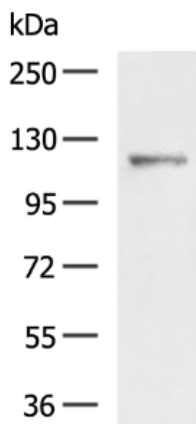
In comparison with the IHC on the left, the same paraffin-embedded Human cervical cancer tissue is first treated with the synthetic peptide and then with 219894(Anti-LRIG1 Antibody) at dilution 1/95.



The image on the left is immunohistochemistry of paraffin-embedded Human prostate cancer tissue using 219894(Anti-LRIG1 Antibody) at a dilution of 1/95.



In comparison with the IHC on the left, the same paraffin-embedded Human prostate cancer tissue is first treated with synthetic peptide and then with D260563(Anti-LRIG1 Antibody) at dilution 1/95.



Gel: 6%SDS-PAGE, Lysate: 40 µg;
Lane: Mouse skeletal muscle tissue lysate;
Primary antibody: 219894(LRIG1 Antibody) at dilution 1/1300;
Secondary antibody: HRP-conjugated Goat anti rabbit IgG at 1/5000 dilution;
Exposure time: 10 seconds



Product Description

Pioneering GTPase and Oncogene Product Development since 2010
