

## LRATD2 RABBIT PAB

**Cat.#:** S222013

**Product Name:** Anti-LRATD2 Rabbit Polyclonal Antibody

**Synonyms:** NSE2; FAM84B; BCMP101

**UNIPROT ID:** Q96KNI (Gene Accession - NP\_777571 )

**Background:** FAM84B (family with sequence similarity 84, member B), also known as NSE2 or BCMP101, is a 310 amino acid protein that is expressed in esophageal squamous cell carcinomas, suggesting a role in tumor development and metastasis. The gene encoding FAM84B maps to human chromosome 8, which consists of nearly 146 million base pairs, houses more than 800 genes and is associated with a variety of diseases and malignancies. Schizophrenia, bipolar disorder, trisomy 8, Pfeiffer syndrome, congenital hypothyroidism, Waardenburg syndrome and some leukemias and lymphomas are thought to occur as a result of defects in specific genes that map to chromosome 8.

**Immunogen:** Synthetic peptide of human LRATD2

**Applications:** ELISA, WB, IHC

**Recommended Dilutions:** IHC: 40-200;WB: 500-2000;ELISA: 5000-10000

**Host Species:** Rabbit

**Clonality:** Rabbit Polyclonal

**Isotype:** Immunogen-specific rabbit IgG

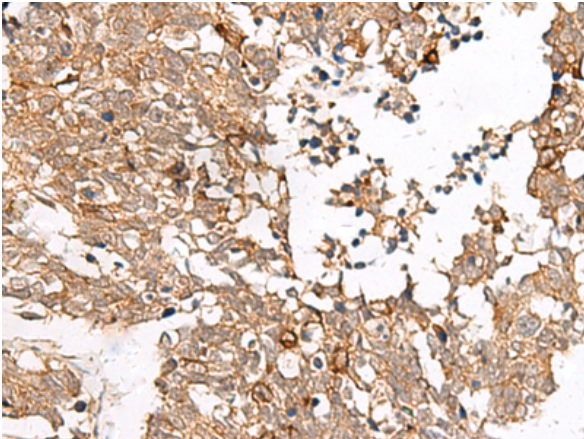
**Purification:** Antigen affinity purification

**Species Reactivity:** Human

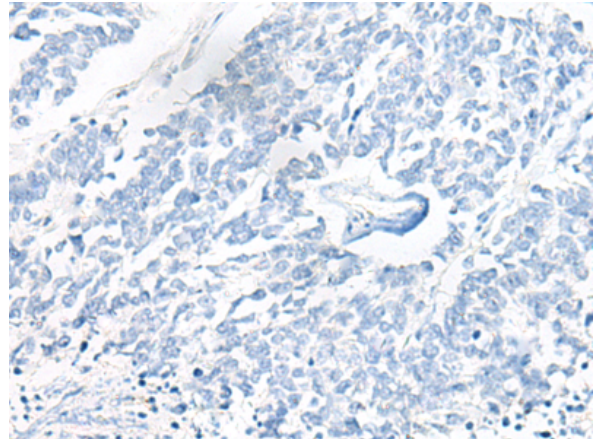
**Constituents:** PBS (without Mg<sup>2+</sup> and Ca<sup>2+</sup>), pH 7.4, 150 mM NaCl, 0.05% Sodium Azide and 40% glycerol

**Research Areas:** Cell Biology, Neuroscience

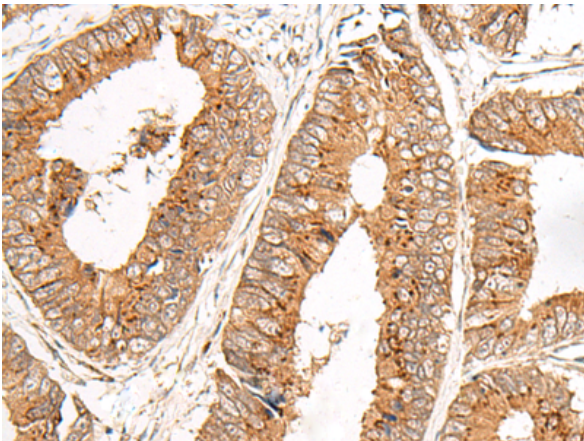
**Storage & Shipping:** Store at -20°C. Avoid repeated freezing and thawing



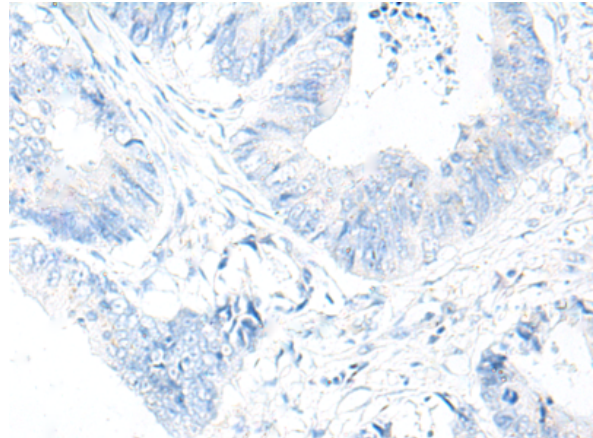
Immunohistochemistry analysis of paraffin embedded Human lung cancer tissue using 222013(LRATD2 Antibody) at a dilution of 1/45(Cytoplasm and Nucleus).



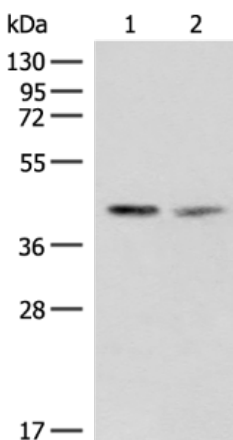
In comparison with the IHC on the left, the same paraffin-embedded Human lung cancer tissue is first treated with the synthetic peptide and then with 222013(Anti-LRATD2 Antibody) at dilution 1/45.



The image on the left is immunohistochemistry of paraffin-embedded Human colorectal cancer tissue using 222013(Anti-LRATD2 Antibody) at a dilution of 1/45.



In comparison with the IHC on the left, the same paraffin-embedded Human colorectal cancer tissue is first treated with synthetic peptide and then with D263881(Anti-LRATD2 Antibody) at dilution 1/45.



Gel: 8%SDS-PAGE, Lysate: 40 µg;  
Lane 1-2: PC3 and HUVEC cell lysates;  
Primary antibody: 222013(LRATD2 Antibody) at dilution 1/400;  
Secondary antibody: Goat anti rabbit IgG at 1/8000 dilution;  
Exposure time: 30 seconds



# Product Description

Pioneering GTPase and Oncogene Product Development since 2010

---