

## LPCAT4 RABBIT PAB

**Cat.#:** S220040

**Product Name:** Anti-LPCAT4 Rabbit Polyclonal Antibody

**Synonyms:** AYTL3; AGPAT7; LPEAT2; LPAAT-eta

**UNIPROT ID:** Q643R3 (Gene Accession - NP\_705841)

**Background:** Members of the 1-acylglycerol-3-phosphate O-acyltransferase (EC 2.3.1.51) family, such as AGPAT7, catalyze the conversion of lysophosphatidic acid (LPA) to phosphatidic acid (PA), a precursor in the biosynthesis of all glycerolipids. Both LPA and PA are involved in signal transduction.

**Immunogen:** Synthetic peptide of human LPCAT4

**Applications:** ELISA, WB, IHC

**Recommended Dilutions:** IHC: 50-100;WB: 500-2000;ELISA: 5000-10000

**Host Species:** Rabbit

**Clonality:** Rabbit Polyclonal

**Isotype:** Immunogen-specific rabbit IgG

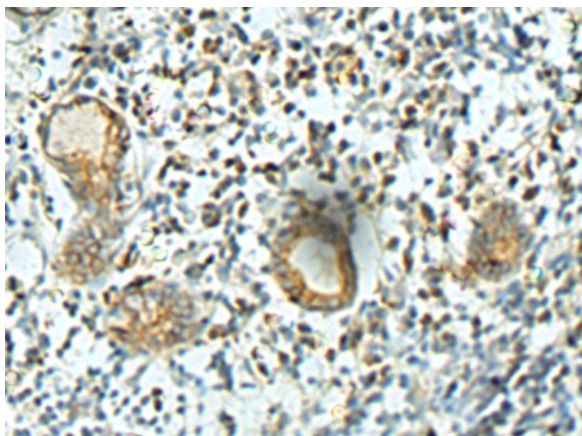
**Purification:** Antigen affinity purification

**Species Reactivity:** Human, Mouse

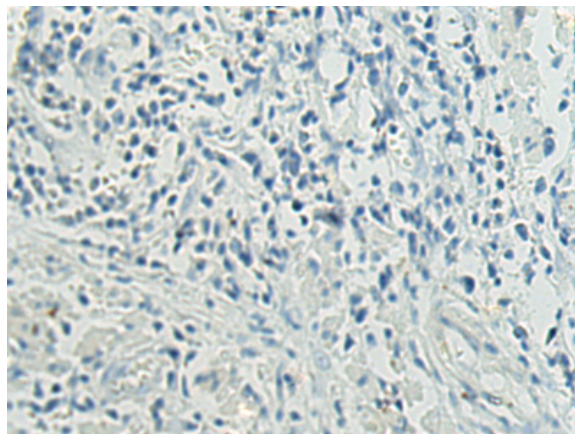
**Constituents:** PBS (without Mg<sup>2+</sup> and Ca<sup>2+</sup>), pH 7.4, 150 mM NaCl, 0.05% Sodium Azide and 40% glycerol

**Research Areas:** Metabolism

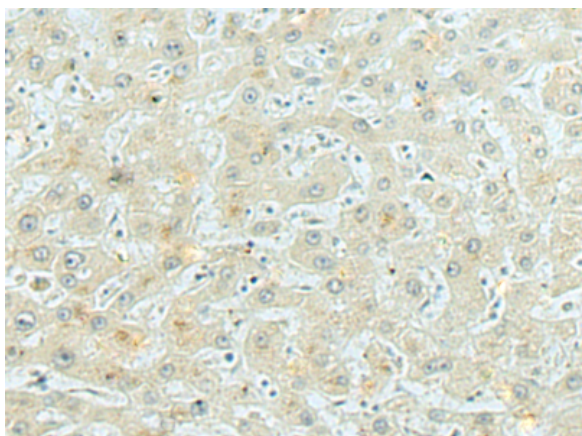
**Storage & Shipping:** Store at -20°C. Avoid repeated freezing and thawing



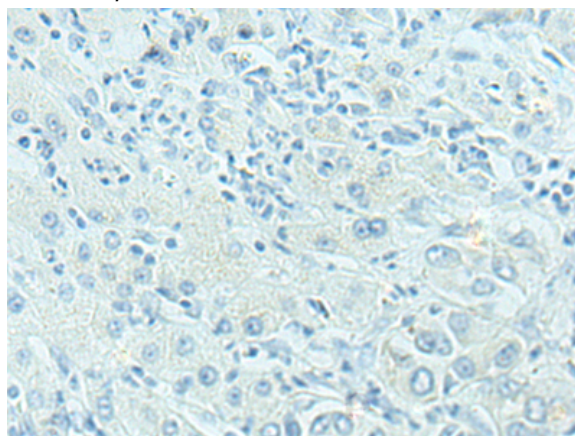
Immunohistochemistry analysis of paraffin embedded Human esophagus cancer tissue using 220040(LPCAT4 Antibody) at a dilution of 1/30(Cell membrane).



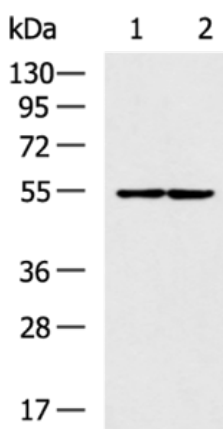
In comparison with the IHC on the left, the same paraffin-embedded Human esophagus cancer tissue is first treated with the synthetic peptide and then with 220040(Anti-LPCAT4 Antibody) at dilution 1/30.



The image on the left is immunohistochemistry of paraffin-embedded Human liver cancer tissue using 220040(Anti-LPCAT4 Antibody) at a dilution of 1/30.



In comparison with the IHC on the left, the same paraffin-embedded Human liver cancer tissue is first treated with synthetic peptide and then with D260841(Anti-LPCAT4 Antibody) at dilution 1/30.



Gel: 8%SDS-PAGE, Lysate: 40 µg;  
 Lane 1-2: Human cerebella tissue, Human cerebrum tissue lysates;  
 Primary antibody: 220040(LPCAT4 Antibody) at dilution 1/200;  
 Secondary antibody: HRP-conjugated Goat anti rabbit IgG at 1/5000 dilution;  
 Exposure time: 40 seconds



# Product Description

Pioneering GTPase and Oncogene Product Development since 2010

---