

## LMO2 RABBIT MAB

**Cat.#:** N262473

**Product Name:** Anti-LMO2 Rabbit Monoclonal Antibody

**Synonyms:** TTG2; LMO-2; RBTN2; RHOM2; RBTNLI

**UNIPROT ID:** P25791

**Background:** Acts with TAL1/SCL to regulate red blood cell development. Also acts with LDB1 to maintain erythroid precursors in an immature state.

**Immunogen:** A synthetic peptide of human LMO2

**Applications:** WB,IP

**Recommended Dilutions:** WB: 1/500-1/1000 IP: 1/20

**Host Species:** Rabbit

**Clonality:** Rabbit Monoclonal

**Clone ID:** R06-5F6

**MW:** Calculated MW: 18 kDa; Observed MW: 18 kDa

**Isotype:** IgG

**Purification:** Affinity Purified

**Species Reactivity:** Human

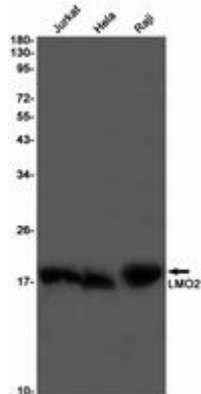
**Conjugation:** Unconjugated

**Modification:** Unmodified

**Constituents:** PBS (without Mg<sup>2+</sup> and Ca<sup>2+</sup>), pH 7.3 containing 50% glycerol, 0.5% BSA and 0.02% sodium azide

**Research Areas:** Cardiovascular

**Storage & Shipping:** Store at -20°C. Avoid repeated freezing and thawing



Western blot analysis of LMO2 in Jurkat, HeLa, Raji lysates using LMO2 antibody.



# Product Description

Pioneering GTPase and Oncogene Product Development since 2010

---