

LMAN1 RABBIT MAB

Cat.#: N263408

Product Name: Anti-LMAN1 Rabbit Monoclonal Antibody

Synonyms: ERGIC5; F5F8D; FMFD1; Gp58; Lman1; MCFD1; MR60

UNIPROT ID: P49257

Background: Mannose-specific lectin. May recognize sugar residues of glycoproteins, glycolipids, or glycosylphosphatidyl inositol anchors and may be involved in the sorting or recycling of proteins, lipids, or both. The LMAN1-MCFD2 complex forms a specific cargo receptor for the ER-to-Golgi transport of selected proteins.

Immunogen: A synthetic peptide of human LMAN1

Applications: WB,IHC-P

Recommended Dilutions: WB: 1/500-1/1000 IHC: 1/50-1/100

Host Species: Rabbit

Clonality: Rabbit Monoclonal

Clone ID: R03-5C3

MW: Calculated MW: 58 kDa; Observed MW: 58 kDa

Isotype: IgG

Purification: Affinity Purified

Species Reactivity: Human

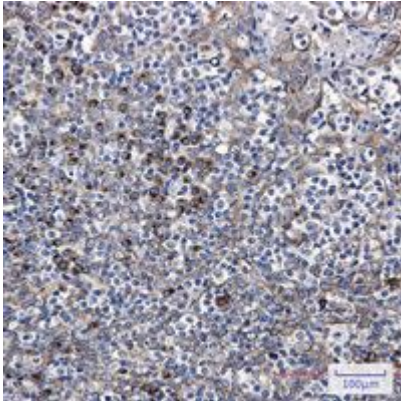
Conjugation: Unconjugated

Modification: Unmodified

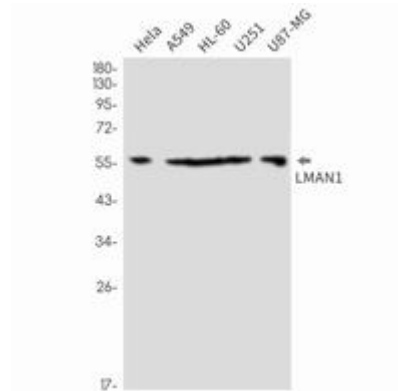
Constituents: PBS (without Mg²⁺ and Ca²⁺), pH 7.3 containing 50% glycerol, 0.5% BSA and 0.02% sodium azide

Research Areas: Signal Transduction

Storage & Shipping: Store at -20°C. Avoid repeated freezing and thawing



Immunohistochemistry analysis of paraffin-embedded Human tonsil using LMAN1 antibody. High-pressure and temperature Sodium Citrate pH 6.0 was used for antigen retrieval.



Western blot analysis of LMAN1 in Hela, A549, HL-60, U251, U87-MG lysates using LMAN1 antibody.