

## LLGL1 RABBIT PAB

**Cat.#:** S214452

**Product Name:** Anti-LLGL1 Rabbit Polyclonal Antibody

**Synonyms:** DLG4; HUGL; LLGL; HUGL1; HUGL-1

**UNIPROT ID:** Q15334 (Gene Accession - NP\_004131 )

**Background:** This gene encodes a protein that is similar to a tumor suppressor in *Drosophila*. The protein is part of a cytoskeletal network and is associated with nonmuscle myosin II heavy chain and a kinase that specifically phosphorylates this protein at serine residues. The gene is located within the Smith-Magenis syndrome region on chromosome 17.

**Immunogen:** Synthetic peptide of human LLGL1

**Applications:** ELISA, IHC

**Recommended Dilutions:** IHC: 50-200; ELISA: 2000-5000

**Host Species:** Rabbit

**Clonality:** Rabbit Polyclonal

**Isotype:** Immunogen-specific rabbit IgG

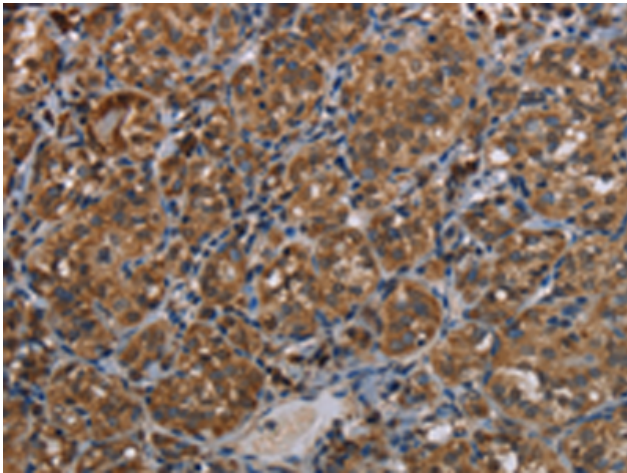
**Purification:** Antigen affinity purification

**Species Reactivity:** Human

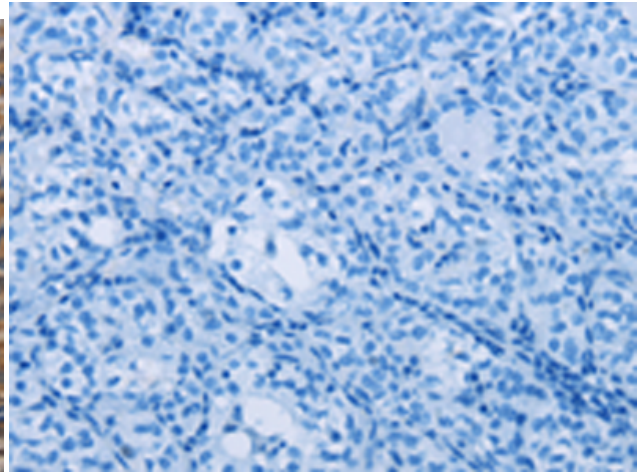
**Constituents:** PBS (without Mg<sup>2+</sup> and Ca<sup>2+</sup>), pH 7.4, 150 mM NaCl, 0.05% Sodium Azide and 40% glycerol

**Research Areas:** Neuroscience, Signal Transduction, Stem Cells

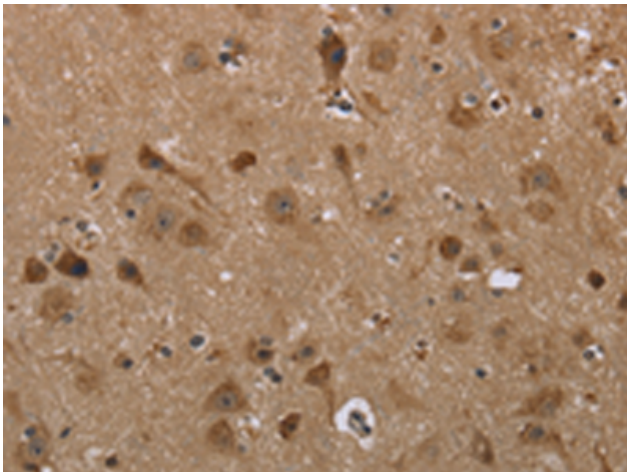
**Storage & Shipping:** Store at -20°C. Avoid repeated freezing and thawing



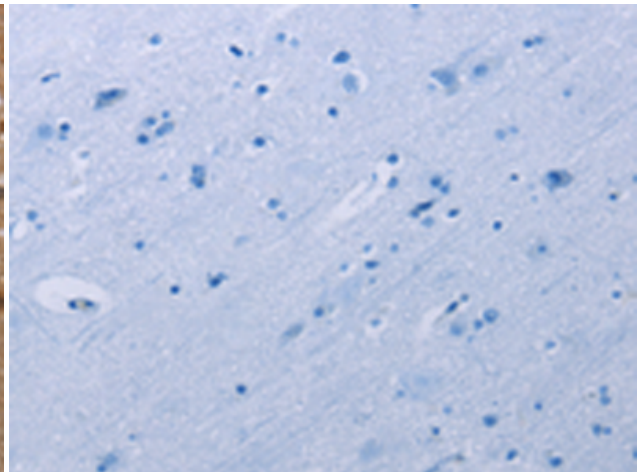
Immunohistochemistry analysis of paraffin embedded Human thyroid cancer tissue using 214452(LLGL1 Antibody) at a dilution of 1/40(Cytoplasm).



In comparison with the IHC on the left, the same paraffin-embedded Human thyroid cancer tissue is first treated with the synthetic peptide and then with 214452(Anti-LLGL1 Antibody) at dilution 1/40.



The image on the left is immunohistochemistry of paraffin-embedded Human brain tissue using 214452(Anti-LLGL1 Antibody) at a dilution of 1/40.



In comparison with the IHC on the left, the same paraffin-embedded Human brain tissue is first treated with synthetic peptide and then with D161861(Anti-LLGL1 Antibody) at dilution 1/40.