

LIS1 RABBIT MAB

Cat.#: N262470

Product Name: Anti-LIS1 Rabbit Monoclonal Antibody

Synonyms: MDS; LIS1; LIS2; MDCR; NudF; PAFAH

UNIPROT ID: P43034

Background: Required for proper activation of Rho GTPases and actin polymerization at the leading edge of locomoting cerebellar neurons and postmigratory hippocampal neurons in response to calcium influx triggered via NMDA receptors.

Immunogen: A synthetic peptide of human LIS1

Applications: WB,IP

Recommended Dilutions: WB: 1/500-1/1000 IP: 1/20

Host Species: Rabbit

Clonality: Rabbit Monoclonal

Clone ID: R03-210

MW: Calculated MW: 47 kDa; Observed MW: 47 kDa

Isotype: IgG

Purification: Affinity Purified

Species Reactivity: Hamster,Rat

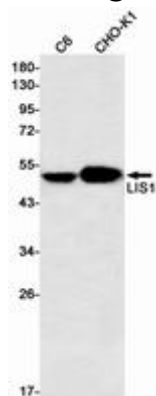
Conjugation: Unconjugated

Modification: Unmodified

Constituents: PBS (without Mg²⁺ and Ca²⁺), pH 7.3 containing 50% glycerol, 0.5% BSA and 0.02% sodium azide

Research Areas: Neuroscience

Storage & Shipping: Store at -20°C. Avoid repeated freezing and thawing



Western blot analysis of LIS1 in C6, CHO-K1 lysates using LIS1 antibody.



Product Description

Pioneering GTPase and Oncogene Product Development since 2010
