

## LIPIN 1 RABBIT PAB

**Cat.#:** N226029

**Product Name:** Anti-Lipin 1 Rabbit pAb

**Synonyms:** Lipin-1; Lpin1; PAPI

**UNIPROT ID:** Q14693

**Background:** Plays important roles in controlling the metabolism of fatty acids at different levels. Acts as a magnesium-dependent phosphatidate phosphatase enzyme which catalyzes the conversion of phosphatidic acid to diacylglycerol during triglyceride, phosphatidylcholine and phosphatidylethanolamine biosynthesis in the reticulum endoplasmic membrane.

**Immunogen:** A synthetic peptide of human Lipin 1

**Applications:** WB,IHC-F,IHC-P,ICC/IF,FC,IP

**Recommended Dilutions:** WB: 1/500-1/1000 IHC: 1/50-1/100 IF: 1/50-1/200 IP: 1/20 FC: 1/50-1/100

**Host Species:** Rabbit

**Clonality:** Rabbit Polyclonal

**Clone ID:** -

**MW:** Calculated MW: 99 kDa; Observed MW: 130 kDa

**Isotype:** IgG

**Purification:** Affinity Purified

**Species Reactivity:** Human

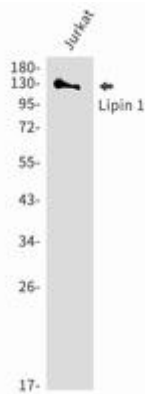
**Conjugation:** Unconjugated

**Modification:** Unmodified

**Constituents:** PBS (without Mg<sup>2+</sup> and Ca<sup>2+</sup>), pH 7.3 containing 50% glycerol, 0.5% BSA and 0.02% sodium azide

**Research Areas:** Cardiovascular

**Storage & Shipping:** Store at -20°C. Avoid repeated freezing and thawing



Western blot analysis of Lipin 1 in Jurkat lysates using Lipin 1 antibody.