

LIPC RABBIT PAB

Cat.#: S217500

Product Name: Anti-LIPC Rabbit Polyclonal Antibody

Synonyms: HL; HTGL; LIPH; HDLCQ12

UNIPROT ID: P11150 (Gene Accession - BC132825)

Background: LIPC encodes hepatic triglyceride lipase, which is expressed in liver. LIPC has the dual functions of triglyceride hydrolase and ligand/bridging factor for receptor-mediated lipoprotein uptake.

Immunogen: Fusion protein of human LIPC

Applications: ELISA, WB, IHC

Recommended Dilutions: IHC: 200-300;WB: 1000-5000;ELISA: 5000-10000

Host Species: Rabbit

Clonality: Rabbit Polyclonal

Isotype: Immunogen-specific rabbit IgG

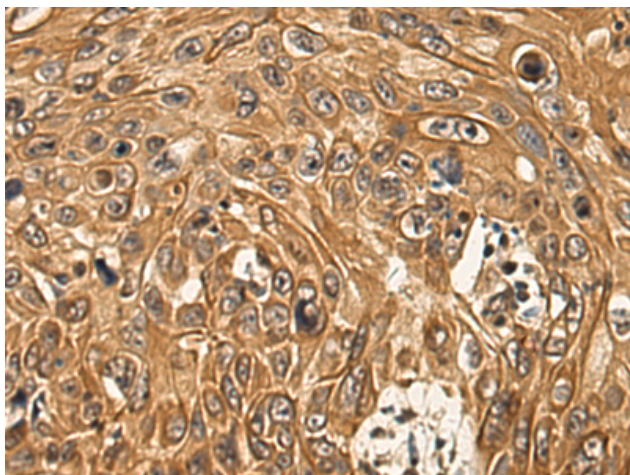
Purification: Antigen affinity purification

Species Reactivity: Human, Mouse

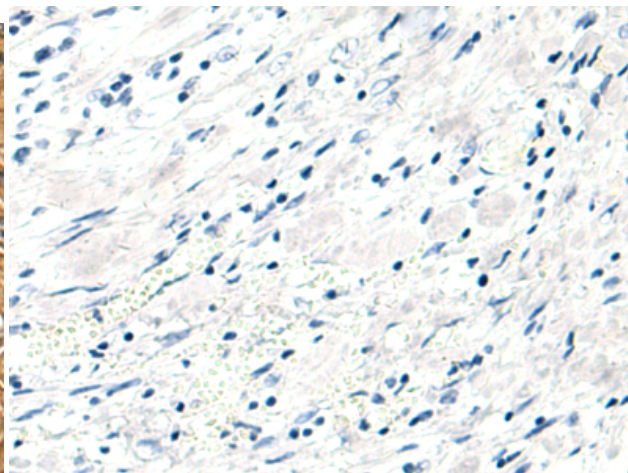
Constituents: PBS (without Mg²⁺ and Ca²⁺), pH 7.4, 150 mM NaCl, 0.05% Sodium Azide and 40% glycerol

Research Areas: Metabolism, Cardiovascular

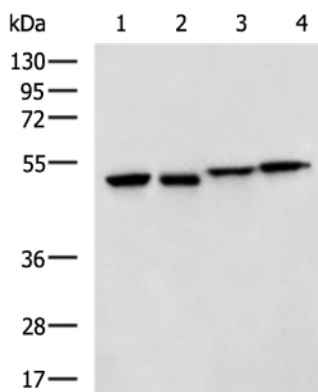
Storage & Shipping: Store at -20°C. Avoid repeated freezing and thawing



Immunohistochemistry analysis of paraffin embedded Human esophagus cancer tissue using 217500(LIPC Antibody) at a dilution of 1/150(Secreted).



In comparison with the IHC on the left, the same paraffin-embedded Human esophagus cancer tissue is first treated with the fusion protein and then with 217500(Anti-LIPC Antibody) at dilution 1/150.



Gel: 8%SDS-PAGE, Lysate: 40 μ g;
 Lane 1-4: LOVO, HT-29, K562 and NIH/3T3 cell lysates;
 Primary antibody: 217500(LIPC Antibody) at dilution 1/1150;
 Secondary antibody: HRP-conjugated Goat anti rabbit IgG at 1/5000 dilution;
 Exposure time: 10 seconds