

LINE 1 ORF1P RABBIT MAB

Cat.#: N263406

Product Name: Anti-LINE 1 ORF1p Rabbit Monoclonal Antibody

Synonyms: L1ORF1p; L1RE1; LRE1

UNIPROT ID: Q9UN81

Background: Nucleic acid-binding protein which is essential for retrotransposition of LINE-1 elements in the genome.

Immunogen: Recombinant protein of human LINE-1 ORF1p

Applications: WB,IP

Recommended Dilutions: WB: 1/500-1/1000 IP: 1/20

Host Species: Rabbit

Clonality: Rabbit Monoclonal

Clone ID: R02-2H1

MW: Calculated MW: 40 kDa; Observed MW: 40 kDa

Isotype: IgG

Purification: Affinity Purified

Species Reactivity: Human

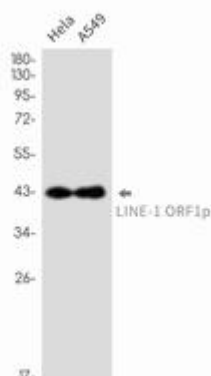
Conjugation: Unconjugated

Modification: Unmodified

Constituents: PBS (without Mg²⁺ and Ca²⁺), pH 7.3 containing 50% glycerol, 0.5% BSA and 0.02% sodium azide

Research Areas: Epigenetics and Nuclear Signaling

Storage & Shipping: Store at -20°C. Avoid repeated freezing and thawing



Western blot analysis of LINE1 ORF1p in HeLa, A549 lysates using LINE 1 ORF1p antibody.



Product Description

Pioneering GTPase and Oncogene Product Development since 2010
