

## LILRB2 RABBIT PAB

**Cat.#:** S216597

**Product Name:** Anti-LILRB2 Rabbit Polyclonal Antibody

**Synonyms:** ILT4; LIR2; CD85D; ILT-4; LIR-2; MIR10; MIR-10

**UNIPROT ID:** Q8N423 (Gene Accession - BC036827 )

**Background:** This gene is a member of the leukocyte immunoglobulin-like receptor (LIR) family, which is found in a gene cluster at chromosomal region 19q13.4. The encoded protein belongs to the subfamily B class of LIR receptors which contain two or four extracellular immunoglobulin domains, a transmembrane domain, and two to four cytoplasmic immunoreceptor tyrosine-based inhibitory motifs (ITIMs). The receptor is expressed on immune cells where it binds to MHC class I molecules on antigen-presenting cells and transduces a negative signal that inhibits stimulation of an immune response. It is thought to control inflammatory responses and cytotoxicity to help focus the immune response and limit autoreactivity. Multiple transcript variants encoding different isoforms have been found for this gene.

**Immunogen:** Fusion protein of human LILRB2

**Applications:** ELISA, IHC

**Recommended Dilutions:** IHC: 25-100; ELISA: 2000-5000

**Host Species:** Rabbit

**Clonality:** Rabbit Polyclonal

**Isotype:** Immunogen-specific rabbit IgG

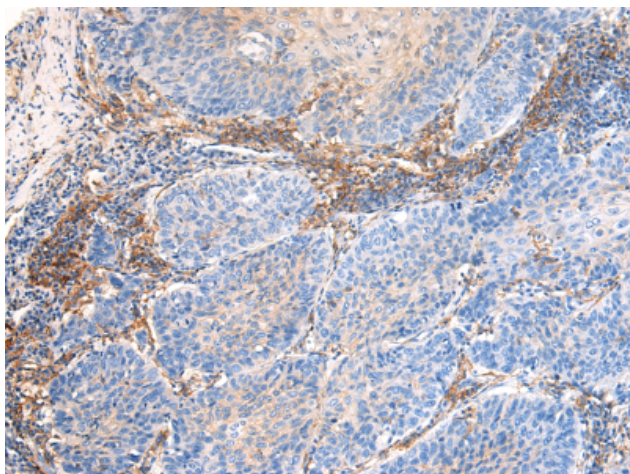
**Purification:** Antigen affinity purification

**Species Reactivity:** Human

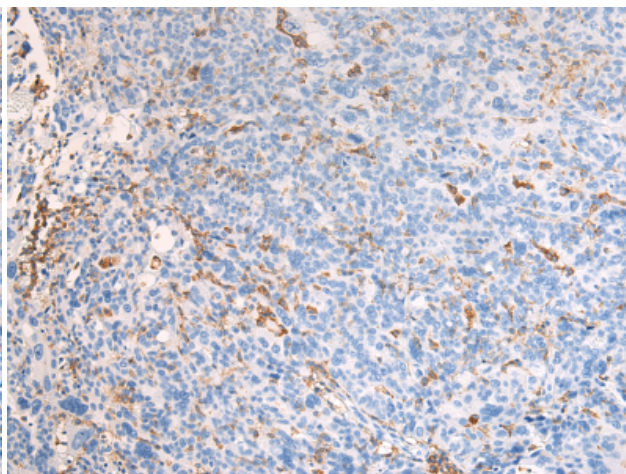
**Constituents:** PBS (without Mg<sup>2+</sup> and Ca<sup>2+</sup>), pH 7.4, 150 mM NaCl, 0.05% Sodium Azide and 40% glycerol

**Research Areas:** Immunology

**Storage & Shipping:** Store at -20°C. Avoid repeated freezing and thawing



Immunohistochemistry analysis of paraffin-embedded Human thyroid cancer tissue using 216597(LILRB2 Antibody) at a dilution of 1/30(Cell membrane).



Immunohistochemistry analysis of paraffin-embedded Human breast cancer tissue using 216597(Anti-LILRB2 Antibody) at a dilution of 1/30.



# Product Description

Pioneering GTPase and Oncogene Product Development since 2010

---