

## LIF RABBIT PAB

**Cat.#:** S219888

**Product Name:** Anti-LIF Rabbit Polyclonal Antibody

**Synonyms:** CDF, DIA, HILDA, MLPLI

**UNIPROT ID:** P15018 (Gene Accession - NP\_002300 )

**Background:** The protein encoded by this gene is a pleiotropic cytokine with roles in several different systems. It is involved in the induction of hematopoietic differentiation in normal and myeloid leukemia cells, induction of neuronal cell differentiation, regulator of mesenchymal to epithelial conversion during kidney development, and may also have a role in immune tolerance at the maternal-fetal interface. Alternatively spliced transcript variants encoding multiple isoforms have been observed for this gene.

**Immunogen:** Synthetic peptide of human LIF

**Applications:** ELISA, IHC

**Recommended Dilutions:** IHC: 25-100; ELISA: 1000-10000

**Host Species:** Rabbit

**Clonality:** Rabbit Polyclonal

**Isotype:** Immunogen-specific rabbit IgG

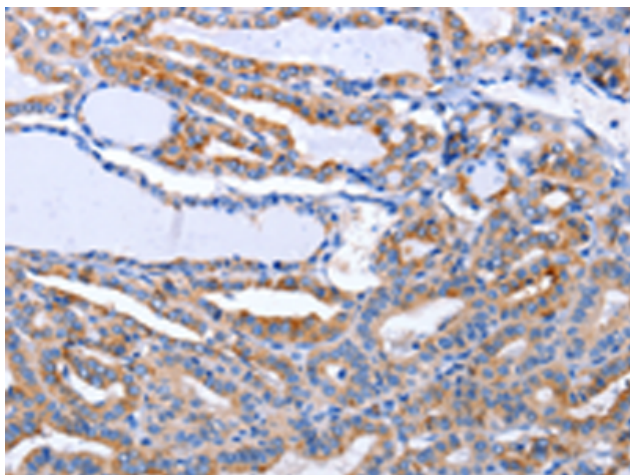
**Purification:** Antigen affinity purification

**Species Reactivity:** Human, Mouse, Rat

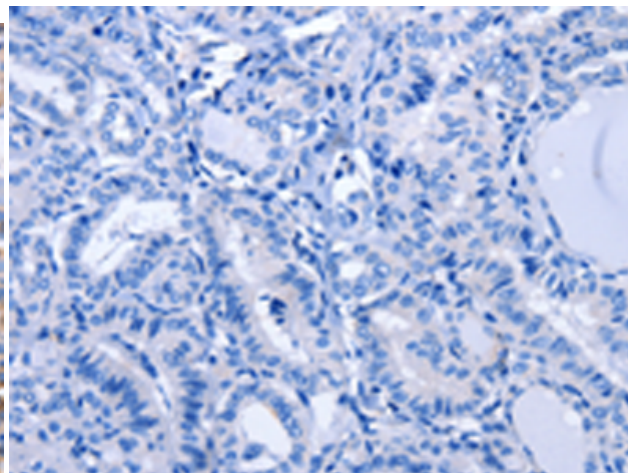
**Constituents:** PBS (without Mg<sup>2+</sup> and Ca<sup>2+</sup>), pH 7.4, 150 mM NaCl, 0.05% Sodium Azide and 40% glycerol

**Research Areas:** Epigenetics and Nuclear Signaling, Cancer, Neuroscience, Immunology

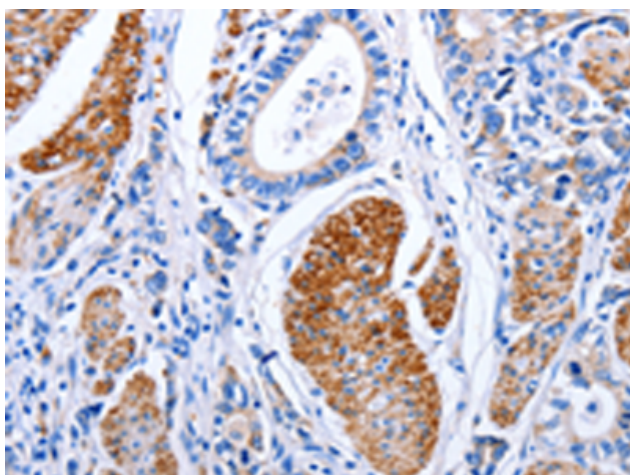
**Storage & Shipping:** Store at -20°C. Avoid repeated freezing and thawing



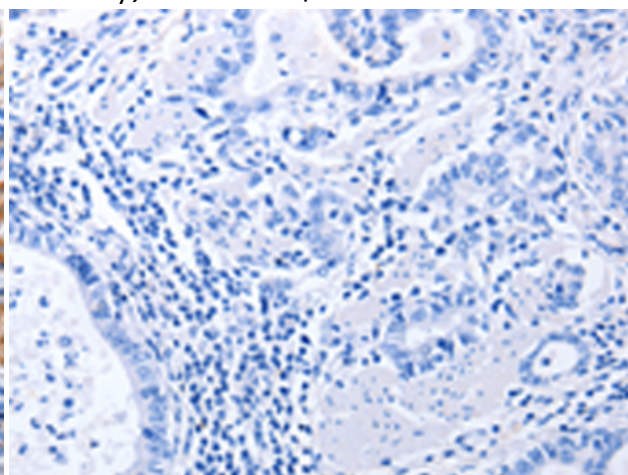
Immunohistochemistry analysis of paraffin-embedded Human thyroid cancer tissue using 219888 (LIF Antibody) at a dilution of 1/25 (Cytoplasm).



In comparison with the IHC on the left, the same paraffin-embedded Human thyroid cancer tissue is first treated with the synthetic peptide and then with 219888 (Anti-LIF Antibody) at dilution 1/25.



The image on the left is immunohistochemistry of paraffin-embedded Human stomach cancer tissue using 219888 (Anti-LIF Antibody) at a dilution of 1/25.



In comparison with the IHC on the left, the same paraffin-embedded Human stomach cancer tissue is first treated with synthetic peptide and then with D260555 (Anti-LIF Antibody) at dilution 1/25.