

## LIF RABBIT PAB

**Cat.#:** N225103

**Product Name:** Anti-LIF Rabbit pAb

**Synonyms:** LIF; HILDA; Leukemia inhibitory factor; LIF; Differentiation-stimulating factor; D factor; Melanoma-derived LPL inhibitor; MLPLI; Emfilermin

**UNIPROT ID:** P15018

**Background:** LIF has the capacity to induce terminal differentiation in leukemic cells.

**Immunogen:** The antiserum was produced against synthesized peptide derived from the C-terminal region of human LIF. AA range:141-190

**Applications:** WB,IHC-P,ELISA

**Recommended Dilutions:** WB: 1/500-1/1000 IHC: 1/50-1/100 ELISA: 1/10000

**Host Species:** Rabbit

**Clonality:** Rabbit Polyclonal

**Clone ID:** -

**MW:** Calculated MW: 22 kDa; Observed MW: 25 kDa

**Isotype:** IgG

**Purification:** Affinity Purified

**Species Reactivity:** Human

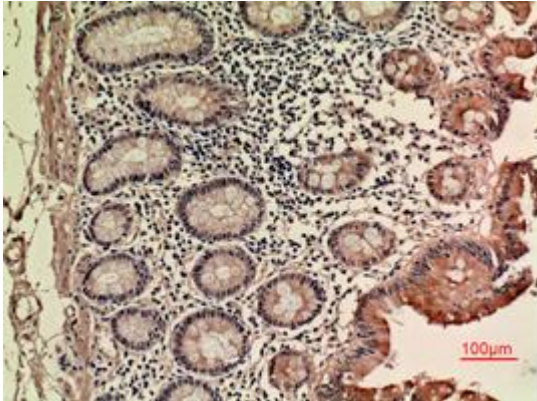
**Conjugation:** Unconjugated

**Modification:** Unmodified

**Constituents:** PBS (without Mg<sup>2+</sup> and Ca<sup>2+</sup>), pH 7.3 containing 50% glycerol, 0.5% BSA and 0.02% sodium azide

**Research Areas:** Immunology

**Storage & Shipping:** Store at -20°C. Avoid repeated freezing and thawing



Immunohistochemistry analysis of paraffin-embedded Human colon using LIF antibody. High-pressure and temperature Sodium Citrate pH 6.0 was used for antigen retrieval.



Western blot analysis of LIF in K562 lysates using LIF antibody.