

LGALS3 RABBIT PAB

Cat.#: S216525

Product Name: Anti-LGALS3 Rabbit Polyclonal Antibody

Synonyms: L31; GAL3; MAC2; CBP35; GALBP; GALIG; LGALS2

UNIPROT ID: P17931 (Gene Accession - BC001120)

Background: This gene encodes a member of the galectin family of carbohydrate binding proteins. Members of this protein family have an affinity for beta-galactosides. The encoded protein is characterized by an N-terminal proline-rich tandem repeat domain and a single C-terminal carbohydrate recognition domain. This protein can self-associate through the N-terminal domain allowing it to bind to multivalent saccharide ligands. This protein localizes to the extracellular matrix, the cytoplasm and the nucleus.

Immunogen: Fusion protein of human LGALS3

Applications: ELISA, WB, IHC

Recommended Dilutions: IHC: 50-200;WB: 500-2000;ELISA: 5000-10000

Host Species: Rabbit

Clonality: Rabbit Polyclonal

Isotype: Immunogen-specific rabbit IgG

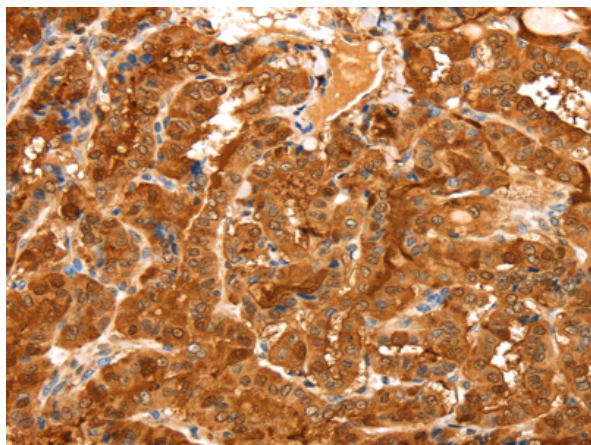
Purification: Antigen affinity purification

Species Reactivity: Human

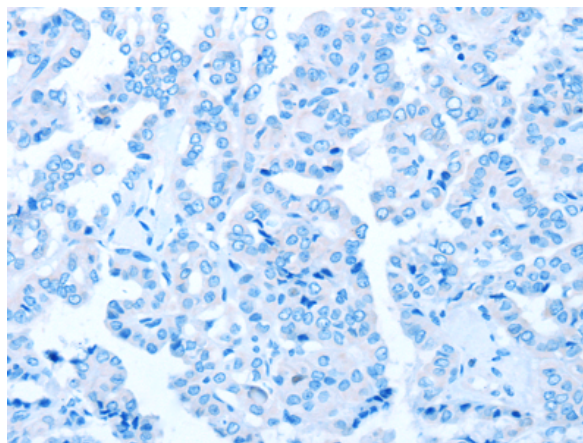
Constituents: PBS (without Mg²⁺ and Ca²⁺), pH 7.4, 150 mM NaCl, 0.05% Sodium Azide and 40% glycerol

Research Areas: Neuroscience, Cancer

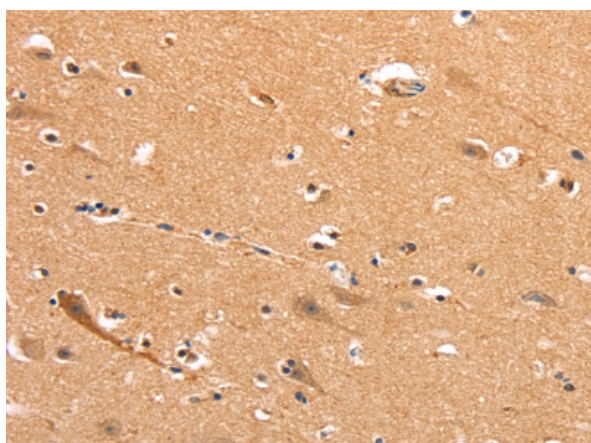
Storage & Shipping: Store at -20°C. Avoid repeated freezing and thawing



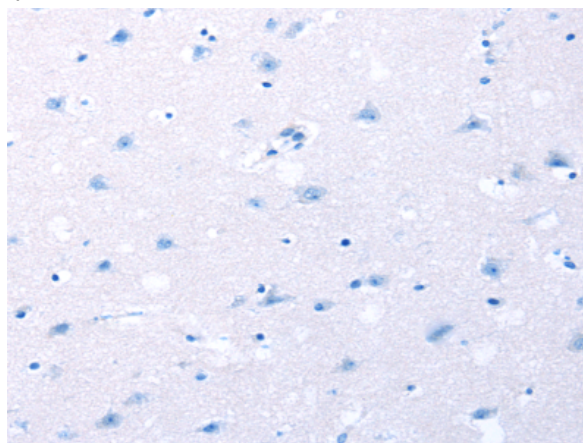
Immunohistochemistry analysis of paraffin embedded Human thyroid cancer tissue using 216525(LGALS3 Antibody) at a dilution of 1/20(cytoplasm or nucleus).



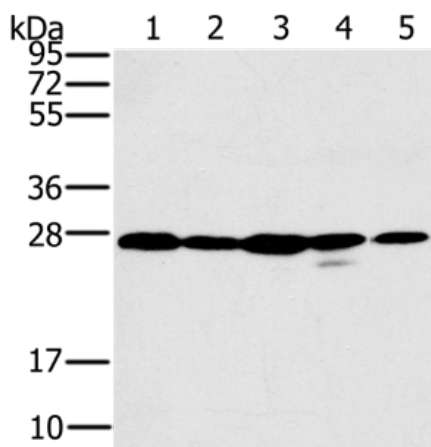
In comparison with the IHC on the left, the same paraffin-embedded Human thyroid cancer tissue is first treated with the fusion protein and then with 216525(Anti-LGALS3 Antibody) at dilution 1/20.



The image on the left is immunohistochemistry of paraffin-embedded Human brain tissue using 216525(Anti-LGALS3 Antibody) at a dilution of 1/20.



In comparison with the IHC on the left, the same paraffin-embedded Human brain tissue is first treated with fusion protein and then with D220661(Anti-LGALS3 Antibody) at dilution 1/20.



Gel: 10%SDS-PAGE, Lysate: 40 µg;
Lane 1-5: 231, A375, Hela, HT-29 and A549 cell;
Primary antibody: 216525(LGALS3 Antibody) at dilution 1/400;
Secondary antibody: Goat anti rabbit IgG at 1/8000 dilution;
Exposure time: 5 seconds



Product Description

Pioneering GTPase and Oncogene Product Development since 2010
