

## LGALS1 RABBIT PAB

**Cat.#:** S216524

**Product Name:** Anti-LGALS1 Rabbit Polyclonal Antibody

**Synonyms:** GBP, GAL1

**UNIPROT ID:** P09382 (Gene Accession - BC001693 )

**Background:** The galectins are a family of beta-galactoside-binding proteins implicated in modulating cell-cell and cell-matrix interactions. This gene product may act as an autocrine negative growth factor that regulates cell proliferation. May regulate apoptosis, cell proliferation and cell differentiation. Binds beta-galactoside and a wide array of complex carbohydrates. Inhibits CD45 protein phosphatase activity and therefore the dephosphorylation of Lyn kinase.

**Immunogen:** Fusion protein of human LGALS1

**Applications:** ELISA, WB, IHC

**Recommended Dilutions:** IHC: 25-100;WB: 500-2000;ELISA: 1000-5000

**Host Species:** Rabbit

**Clonality:** Rabbit Polyclonal

**Isotype:** Immunogen-specific rabbit IgG

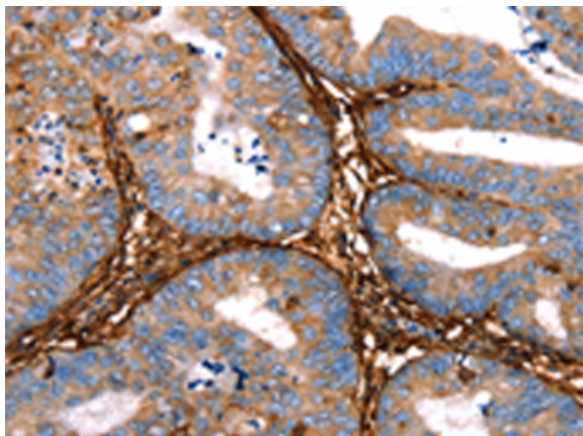
**Purification:** Antigen affinity purification

**Species Reactivity:** Human, Mouse, Rat

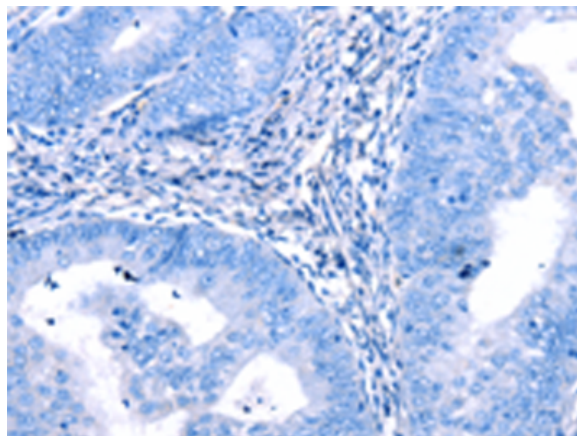
**Constituents:** PBS (without Mg<sup>2+</sup> and Ca<sup>2+</sup>), pH 7.4, 150 mM NaCl, 0.05% Sodium Azide and 40% glycerol

**Research Areas:** Cancer

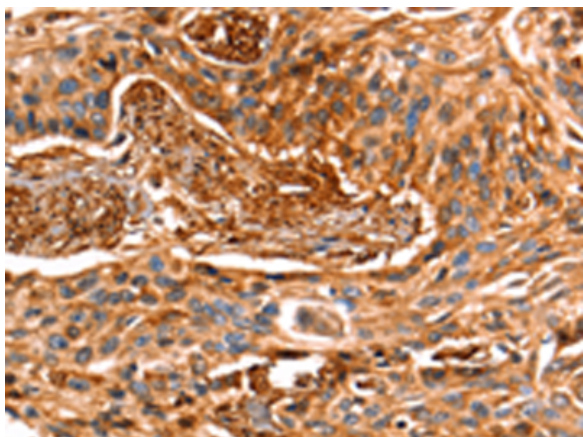
**Storage & Shipping:** Store at -20°C. Avoid repeated freezing and thawing



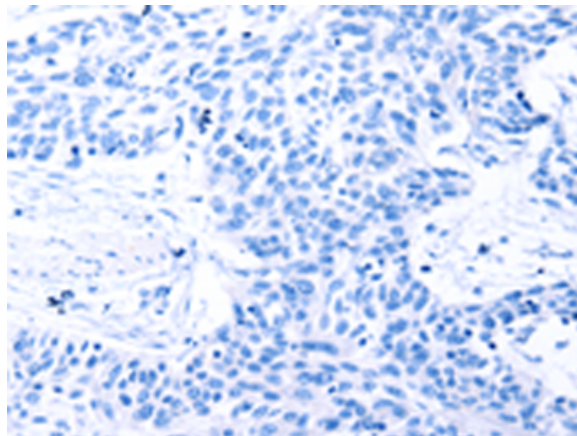
Immunohistochemistry analysis of paraffin embedded Human cervical cancer tissue using 216524(LGALS1 Antibody) at a dilution of 1/25(Cytoplasm, Nucleus).



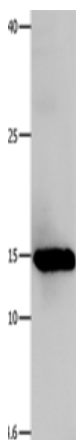
In comparison with the IHC on the left, the same paraffin-embedded Human cervical cancer tissue is first treated with the fusion protein and then with 216524(Anti-LGALS1 Antibody) at dilution 1/25.



The image on the left is immunohistochemistry of paraffin-embedded Human esophagus cancer tissue using 216524(Anti-LGALS1 Antibody) at a dilution of 1/25.



In comparison with the IHC on the left, the same paraffin-embedded Human esophagus cancer tissue is first treated with fusion protein and then with D220660(Anti-LGALS1 Antibody) at dilution 1/25.



Gel: 12+15%SDS-PAGE, Lysate: 40 µg;  
Lane: Human fetal muscle tissue;  
Primary antibody: 216524(LGALS1 Antibody) at dilution 1/500;  
Secondary antibody: Goat anti rabbit IgG at 1/8000 dilution;  
Exposure time: 10 seconds



# Product Description

Pioneering GTPase and Oncogene Product Development since 2010

---