

## LEUKOTRIENE A4 HYDROLASE RABBIT MAB

**Cat.#:** N262467

**Product Name:** Anti-Leukotriene A4 Hydrolase Rabbit Monoclonal Antibody

**Synonyms:** LTA4; LTA4 hydrolase; LTA4H

**UNIPROT ID:** P09960

**Background:** Hydrolyzes an epoxide moiety of leukotriene A4 (LTA-4) to form leukotriene B4 (LTB-4). The enzyme also has some peptidase activity.

**Immunogen:** A synthetic peptide of human Leukotriene A4 hydrolase

**Applications:** WB,IHC-P

**Recommended Dilutions:** WB: 1/500-1/1000 IHC: 1/50-1/100

**Host Species:** Rabbit

**Clonality:** Rabbit Monoclonal

**Clone ID:** R04-6H4

**MW:** Calculated MW: 69 kDa; Observed MW: 69 kDa

**Isotype:** IgG

**Purification:** Affinity Purified

**Species Reactivity:** Human,Mouse,Rat

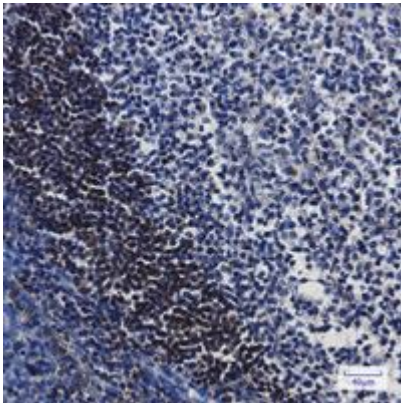
**Conjugation:** Unconjugated

**Modification:** Unmodified

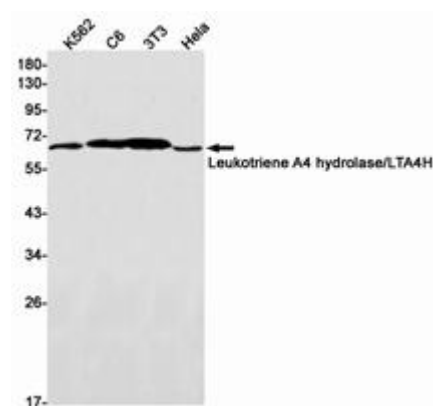
**Constituents:** PBS (without Mg<sup>2+</sup> and Ca<sup>2+</sup>), pH 7.3 containing 50% glycerol, 0.5% BSA and 0.02% sodium azide

**Research Areas:** Immunology

**Storage & Shipping:** Store at -20°C. Avoid repeated freezing and thawing



Immunohistochemistry analysis of paraffin-embedded Human tonsil using Leukotriene A4 hydrolase antibody. High-pressure and temperature Sodium Citrate pH 6.0 was used for antigen retrieval.



Western blot analysis of Leukotriene A4 hydrolase/LTA4H in K562, C6, 3T3, Hela lysates using Leukotriene A4 Hydrolase antibody.