

## LEFTY2 RABBIT PAB

**Cat.#:** S217891

**Product Name:** Anti-LEFTY2 Rabbit Polyclonal Antibody

**Synonyms:** EBAF; LEFTA; TGFB4; LEFTYA

**UNIPROT ID:** O00292 (Gene Accession - BC035718 )

**Background:** This gene encodes a member of the TGF-beta family of proteins. The encoded protein is secreted and plays a role in left-right asymmetry determination of organ systems during development. The protein may also play a role in endometrial bleeding. Mutations in this gene have been associated with left-right axis malformations, particularly in the heart and lungs. Some types of infertility have been associated with dysregulated expression of this gene in the endometrium. Alternative processing of this protein can yield three different products. This gene is closely linked to both a related family member and a related pseudogene. Alternate splicing of this gene results in multiple transcript variants.

**Immunogen:** Full length fusion protein

**Applications:** ELISA, WB, IHC

**Recommended Dilutions:** IHC: Oct-50;WB: 500-2000;ELISA: 2000-5000

**Host Species:** Rabbit

**Clonality:** Rabbit Polyclonal

**Isotype:** Immunogen-specific rabbit IgG

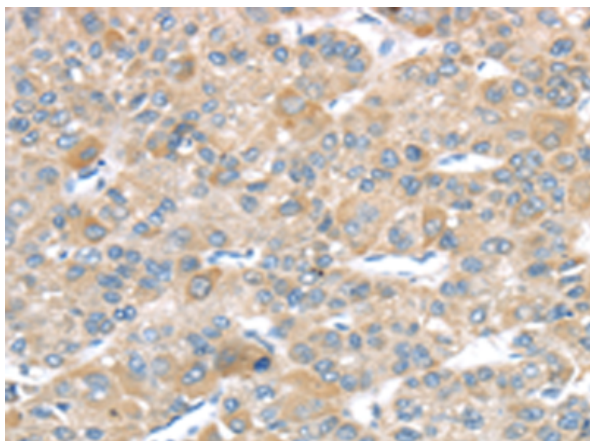
**Purification:** Antigen affinity purification

**Species Reactivity:** Human, Mouse

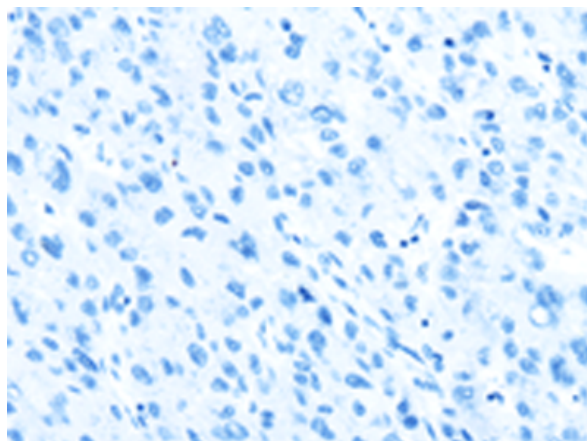
**Constituents:** PBS (without Mg<sup>2+</sup> and Ca<sup>2+</sup>), pH 7.4, 150 mM NaCl, 0.05% Sodium Azide and 40% glycerol

**Research Areas:** Signal Transduction

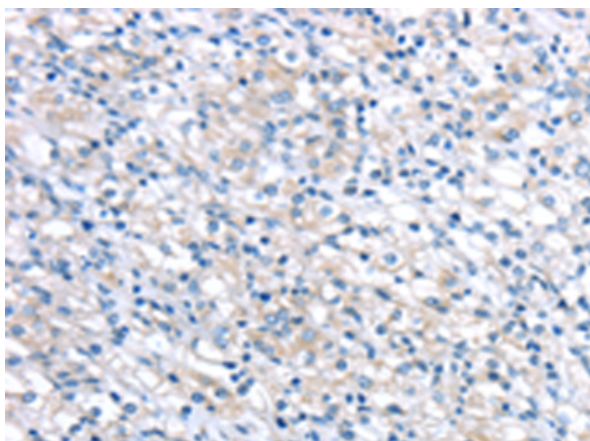
**Storage & Shipping:** Store at -20°C. Avoid repeated freezing and thawing



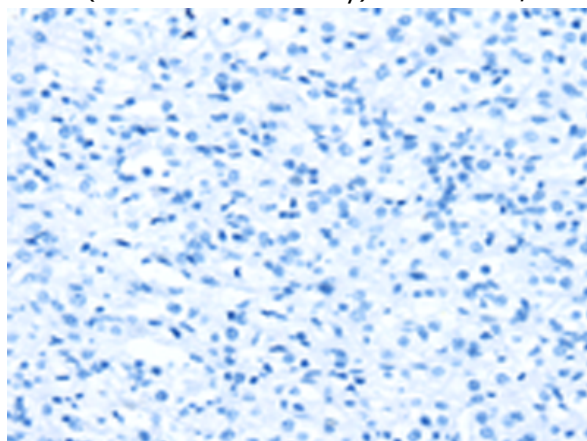
Immunohistochemistry analysis of paraffin embedded Human liver cancer tissue using 217891(LEFTY2 Antibody) at a dilution of 1/20(Cytoplasm and Cell membrane).



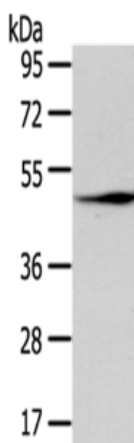
In comparison with the IHC on the left, the same paraffin-embedded Human liver cancer tissue is first treated with the fusion protein and then with 217891(Anti-LEFTY2 Antibody) at dilution 1/20.



The image on the left is immunohistochemistry of paraffin-embedded Human prostate cancer tissue using 217891(Anti-LEFTY2 Antibody) at a dilution of 1/20.



In comparison with the IHC on the left, the same paraffin-embedded Human prostate cancer tissue is first treated with fusion protein and then with D223312(Anti-LEFTY2 Antibody) at dilution 1/20.



Gel: 8%SDS-PAGE, Lysate: 40 µg;  
Lane: Human fetal muscle tissue;  
Primary antibody: 217891(LEFTY2 Antibody) at dilution 1/200;  
Secondary antibody: Goat anti rabbit IgG at 1/8000 dilution;  
Exposure time: 30 seconds



# Product Description

Pioneering GTPase and Oncogene Product Development since 2010

---