

LEF1 RABBIT PAB

Cat.#: N226030

Product Name: Anti-LEF1 Rabbit pAb

Synonyms: LEF1; Lymphoid enhancer-binding factor 1; LEF-1; T cell-specific transcription factor 1-alpha; TCF1-alpha

UNIPROT ID: Q9UJU2

Background: Participates in the Wnt signaling pathway. Activates transcription of target genes in the presence of CTNNB1 and EP300. May play a role in hair cell differentiation and follicle morphogenesis. TLE1, TLE2, TLE3 and TLE4 repress transactivation mediated by LEF1 and CTNNB1. Regulates T-cell receptor alpha enhancer function. Binds DNA in a sequence-specific manner. PIAG antagonizes both Wnt-dependent and Wnt-independent activation by LEF1 (By similarity).

Immunogen: A synthetic peptide of human LEF1

Applications: WB,IHC-F,IHC-P,ICC/IF,FC,IP

Recommended Dilutions: WB: 1/500-1/1000 IHC: 1/50-1/100 IF: 1/50-1/200 IP: 1/20 FC: 1/50-1/100

Host Species: Rabbit

Clonality: Rabbit Polyclonal

Clone ID: -

MW: Calculated MW: 44 kDa; Observed MW: 25-58 kDa

Isotype: IgG

Purification: Affinity Purified

Species Reactivity: Human,Rat

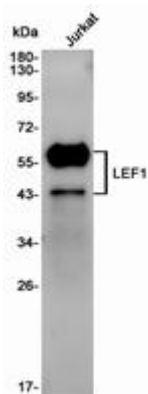
Conjugation: Unconjugated

Modification: Unmodified

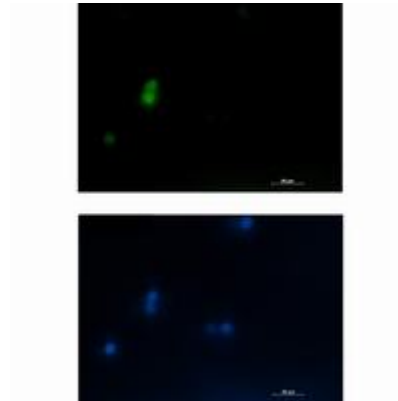
Constituents: PBS (without Mg²⁺ and Ca²⁺), pH 7.3 containing 50% glycerol, 0.5% BSA and 0.02% sodium azide

Research Areas: Epigenetics and Nuclear Signaling

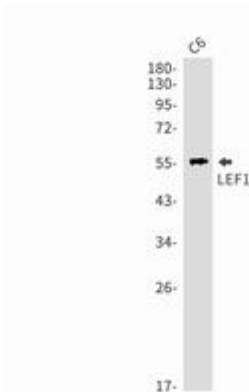
Storage & Shipping: Store at -20°C. Avoid repeated freezing and thawing



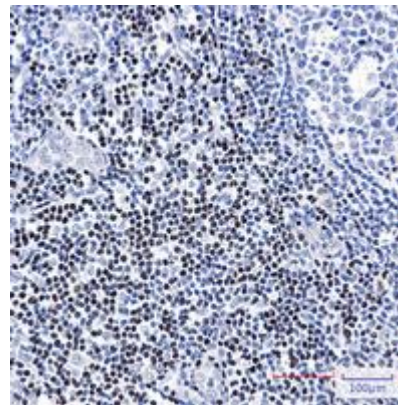
Western blot analysis of LEF1 in Jurkat lysates using LEF1 antibody



Immunocytochemistry analysis of LEF1 (green) in Jurkat using LEF1 antibody, and DAPI (blue).



Western blot analysis of LEF1 in C6 lysates using LEF1 antibody.



Immunohistochemistry analysis of paraffin-embedded Human tonsil using LEF1 antibody. High-pressure and temperature Sodium Citrate pH 6.0 was used for antigen retrieval.