

LDAH RABBIT PAB

Cat.#: S221652

Product Name: Anti-LDAH Rabbit Polyclonal Antibody

Synonyms: hLDAH; C2orf43

UNIPROT ID: Q9H6V9 (Gene Accession - NP_068744)

Background: Serine lipid hydrolase associated with lipid droplets. Highly expressed in macrophage-rich areas in atherosclerotic lesions, suggesting that it could promote cholesterol ester turnover in macrophages.

Immunogen: Synthetic peptide of human LDAH

Applications: ELISA, WB, IHC

Recommended Dilutions: IHC: 50-300;WB: 500-2000;ELISA: 5000-10000

Host Species: Rabbit

Clonality: Rabbit Polyclonal

Isotype: Immunogen-specific rabbit IgG

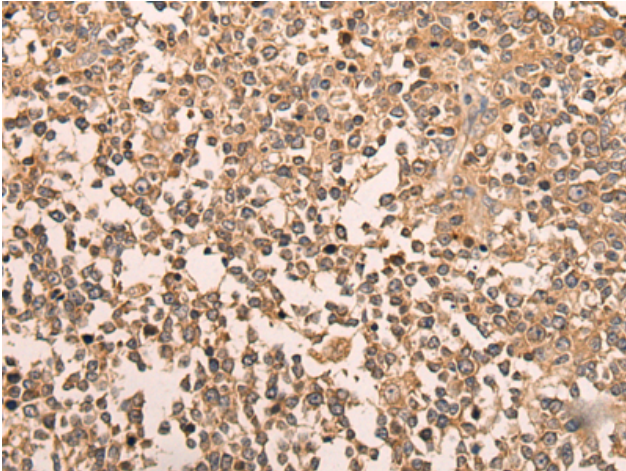
Purification: Antigen affinity purification

Species Reactivity: Human

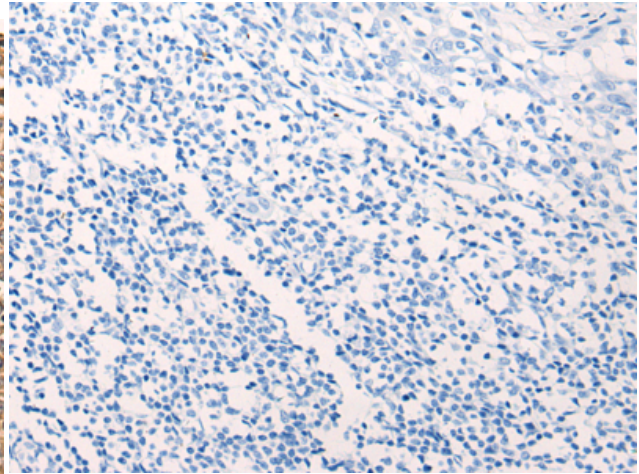
Constituents: PBS (without Mg²⁺ and Ca²⁺), pH 7.4, 150 mM NaCl, 0.05% Sodium Azide and 40% glycerol

Research Areas: Cell Biology

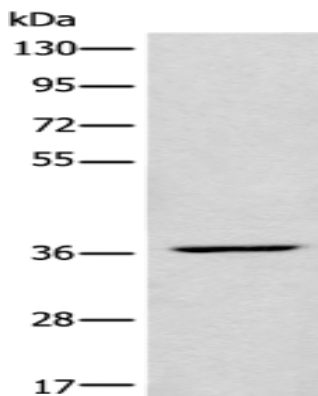
Storage & Shipping: Store at -20°C. Avoid repeated freezing and thawing



Immunohistochemistry analysis of paraffin embedded Human tonsil tissue using 221652(LDAH Antibody) at a dilution of 1/70(Cytoplasm).



In comparison with the IHC on the left, the same paraffin-embedded Human tonsil tissue is first treated with the synthetic peptide and then with 221652(Anti-LDAH Antibody) at dilution 1/70.



Gel: 8%SDS-PAGE, Lysate: 40 μ g;
Lane: HEPG2 cell lysate;
Primary antibody: 221652(LDAH Antibody) at dilution 1/650;
Secondary antibody: Goat anti rabbit IgG at 1/8000 dilution;
Exposure time: 3 seconds