

LCMT2 RABBIT PAB

Cat.#: S218770

Product Name: Anti-LCMT2 Rabbit Polyclonal Antibody

Synonyms: PPM2; TYW4

UNIPROT ID: O60294 (Gene Accession - BC015949)

Background: The protein encoded by this intronless gene belongs to the highly variable methyltransferase superfamily. This gene is the inferred homolog of the *Saccharomyces cerevisiae* carboxymethyltransferase gene PPM2 that is essential for the synthesis of the hypermodified guanosine Wybutosine (yW).

Immunogen: Fusion protein of human LCMT2

Applications: ELISA, IHC

Recommended Dilutions: IHC: 40-200; ELISA: 2000-5000

Host Species: Rabbit

Clonality: Rabbit Polyclonal

Isotype: Immunogen-specific rabbit IgG

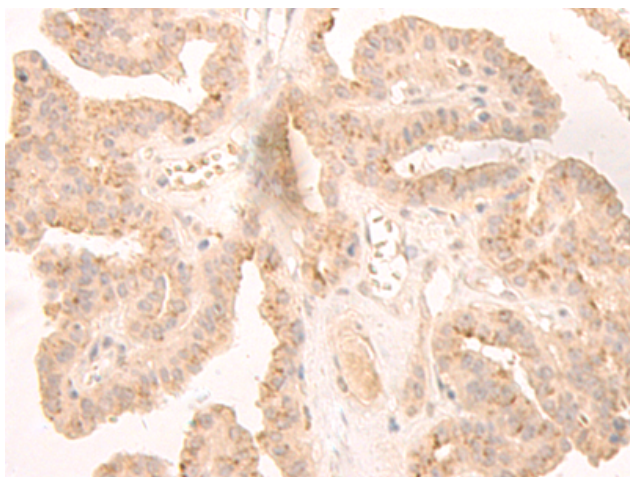
Purification: Antigen affinity purification

Species Reactivity: Human, Mouse, Rat

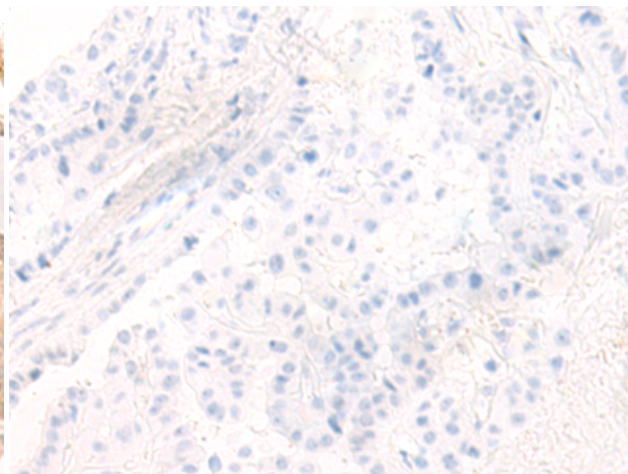
Constituents: PBS (without Mg²⁺ and Ca²⁺), pH 7.4, 150 mM NaCl, 0.05% Sodium Azide and 40% glycerol

Research Areas: Metabolism, Epigenetics and Nuclear Signaling

Storage & Shipping: Store at -20°C. Avoid repeated freezing and thawing



Immunohistochemistry analysis of paraffin embedded Human thyroid cancer tissue using 218770(LCMT2 Antibody) at a dilution of 1/45(Cytoplasm and Nucleus).



In comparison with the IHC on the left, the same paraffin-embedded Human thyroid cancer tissue is first treated with the fusion protein and then with 218770(Anti-LCMT2 Antibody) at dilution 1/45.