

LCMT1 RABBIT PAB

Cat.#: S211323

Product Name: Anti-LCMT1 Rabbit Polyclonal Antibody

Synonyms: LCMT; PPMT1; CGI-68

UNIPROT ID: Q9UIC8 (Gene Accession - BC014217)

Background: LCMT1 catalyzes the methylation of the carboxyl group of the C-terminal leucine residue (Ieu309) of the catalytic subunit of protein phosphatase-2A.

Immunogen: Fusion protein of human LCMT1

Applications: ELISA, IHC

Recommended Dilutions: IHC: 25-100; ELISA: 1000-2000

Host Species: Rabbit

Clonality: Rabbit Polyclonal

Isotype: Immunogen-specific rabbit IgG

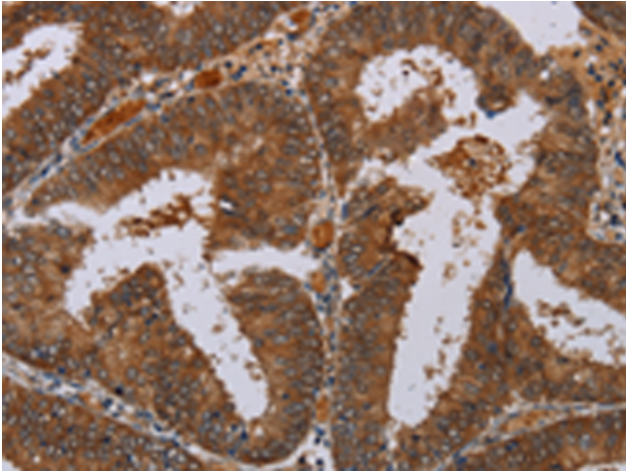
Purification: Antigen affinity purification

Species Reactivity: Human, Rat

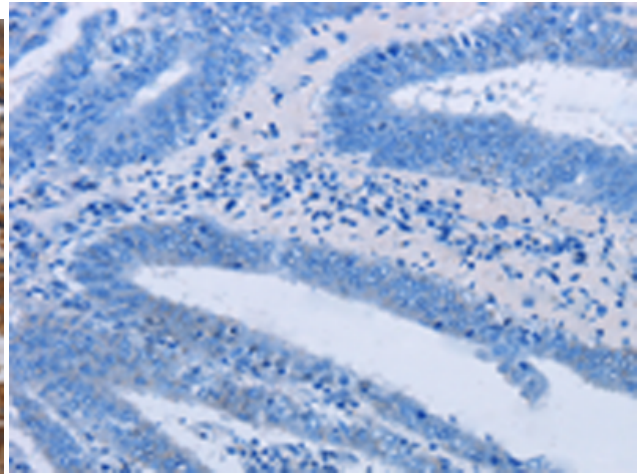
Constituents: PBS (without Mg²⁺ and Ca²⁺), pH 7.4, 150 mM NaCl, 0.05% Sodium Azide and 40% glycerol

Research Areas: Metabolism, Signal Transduction

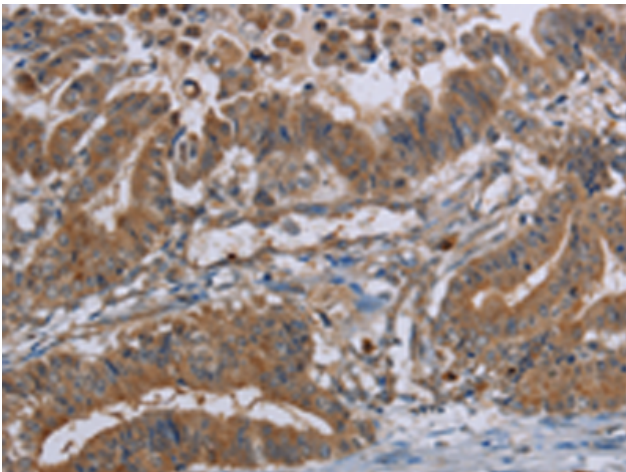
Storage & Shipping: Store at -20°C. Avoid repeated freezing and thawing



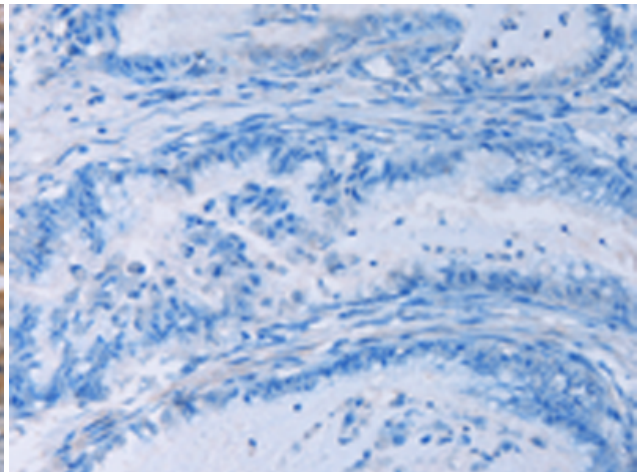
Immunohistochemistry analysis of paraffin embedded Human colon cancer tissue using 211323(LCMT1 Antibody) at a dilution of 1/20(Cytoplasm).



In comparison with the IHC on the left, the same paraffin-embedded Human colon cancer tissue is first treated with the fusion protein and then with 211323(Anti-LCMT1 Antibody) at dilution 1/20.



The image on the left is immunohistochemistry of paraffin-embedded Human esophagus cancer tissue using 211323(Anti-LCMT1 Antibody) at a dilution of 1/20.



In comparison with the IHC on the left, the same paraffin-embedded Human esophagus cancer tissue is first treated with fusion protein and then with D122609(Anti-LCMT1 Antibody) at dilution 1/20.