

LC3B (8H6) MOUSE MAB

Cat.#: N261323

Product Name: Anti-LC3B (8H6) Mouse Monoclonal Antibody

Synonyms: MAP1LC3B

UNIPROT ID: Q9GZQ8

Background: Ubiquitin-like modifier involved in formation of autophagosomal vacuoles (autophagosomes). Plays a role in mitophagy which contributes to regulate mitochondrial quantity and quality by eliminating the mitochondria to a basal level to fulfill cellular energy requirements and preventing excess ROS production.

Immunogen: Purified recombinant protein expressed in E.coli.

Applications: IHC-P

Recommended Dilutions: IHC: 1/50-1/100

Host Species: Mouse

Clonality: Mouse Monoclonal

Clone ID: 8H6-6D10-3A4

MW: -

Isotype: IgG1

Purification: Affinity Purified

Species Reactivity: Human

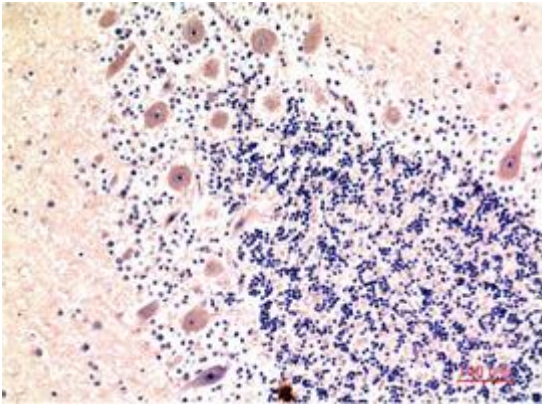
Conjugation: Unconjugated

Modification: Unmodified

Constituents: PBS (without Mg²⁺ and Ca²⁺), pH 7.3 containing 50% glycerol, 0.5% BSA and 0.02% sodium azide

Research Areas: Signal Transduction

Storage & Shipping: Store at -20°C. Avoid repeated freezing and thawing



Immunohistochemistry analysis of paraffin-embedded Human Brain Tissue using LC3B (8H6) antibody. High-pressure and temperature Sodium Citrate pH 6.0 was used for antigen retrieval.