

LBH RABBIT PAB

Cat.#: S219452

Product Name: Anti-LBH Rabbit Polyclonal Antibody

Synonyms:

UNIPROT ID: Q53QV2 (Gene Accession - BC126434)

Background: Transcriptional activator which may act in mitogen-activated protein kinase signaling pathway.

Immunogen: Fusion protein of human LBH

Applications: ELISA, IHC

Recommended Dilutions: IHC: 200-400; ELISA: 5000-10000

Host Species: Rabbit

Clonality: Rabbit Polyclonal

Isotype: Immunogen-specific rabbit IgG

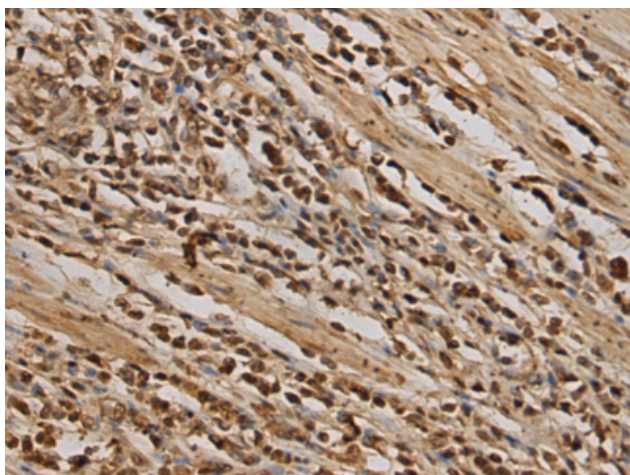
Purification: Antigen affinity purification

Species Reactivity: Human, Mouse

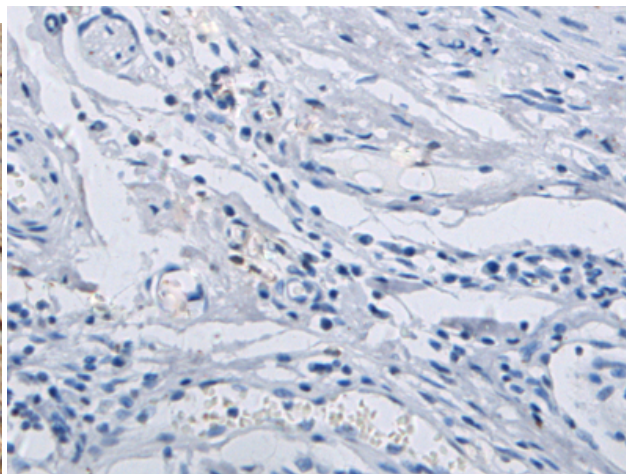
Constituents: PBS (without Mg²⁺ and Ca²⁺), pH 7.4, 150 mM NaCl, 0.05% Sodium Azide and 40% glycerol

Research Areas: Epigenetics and Nuclear Signaling

Storage & Shipping: Store at -20°C. Avoid repeated freezing and thawing



Immunohistochemistry analysis of paraffin embedded Human gastric cancer tissue using 219452(LBH Antibody) at a dilution of 1/180(Nucleus and Cytoplasm).



In comparison with the IHC on the left, the same paraffin-embedded Human gastric cancer tissue is first treated with the fusion protein and then with 219452(Anti-LBH Antibody) at dilution 1/180.