

LBH RABBIT PAB

Cat.#: S218953

Product Name: Anti-LBH Rabbit Polyclonal Antibody

Synonyms:

UNIPROT ID: Q53QV2 (Gene Accession - BC126434)

Background: Transcriptional activator which may act in mitogen-activated protein kinase signaling pathway.

Immunogen: Fusion protein of human LBH

Applications: ELISA, WB, IHC

Recommended Dilutions: IHC: 50-200;WB: 500-2000;ELISA: 5000-10000

Host Species: Rabbit

Clonality: Rabbit Polyclonal

Isotype: Immunogen-specific rabbit IgG

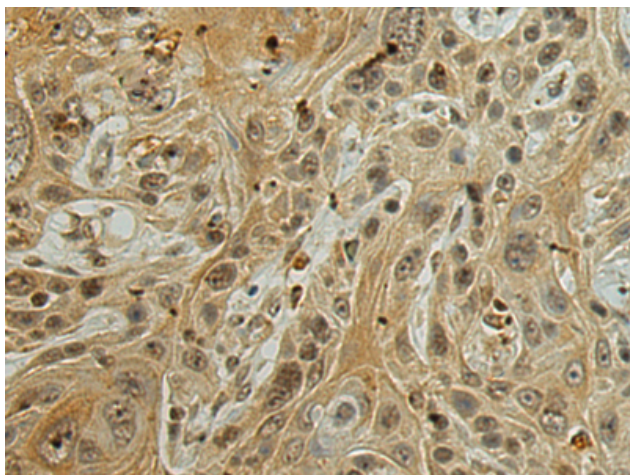
Purification: Antigen affinity purification

Species Reactivity: Human, Mouse, Rat

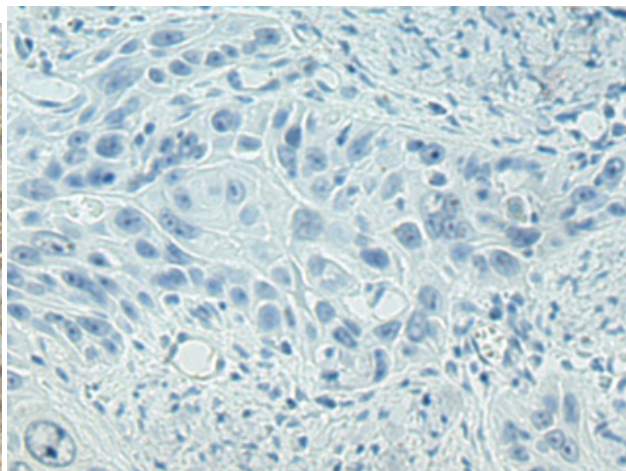
Constituents: PBS (without Mg²⁺ and Ca²⁺), pH 7.4, 150 mM NaCl, 0.05% Sodium Azide and 40% glycerol

Research Areas: Epigenetics and Nuclear Signaling

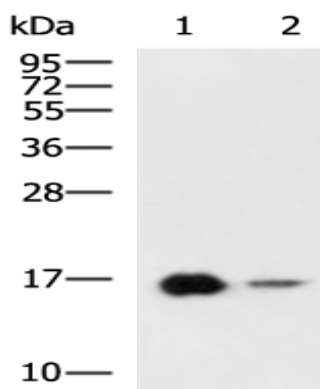
Storage & Shipping: Store at -20°C. Avoid repeated freezing and thawing



Immunohistochemistry analysis of paraffin embedded Human esophagus cancer tissue using 218953(LBH Antibody) at a dilution of 1/120(Nucleus).



In comparison with the IHC on the left, the same paraffin-embedded Human esophagus cancer tissue is first treated with the fusion protein and then with 218953(Anti-LBH Antibody) at dilution 1/120.



Gel: 12%SDS-PAGE, Lysate: 40 μ g;
 Lane 1-2: Rat heart tissue, Mouse skeletal muscle tissue lysates;
 Primary antibody: 218953(LBH Antibody) at dilution 1/800;
 Secondary antibody: HRP-conjugated Goat anti rabbit IgG at 1/5000 dilution;
 Exposure time: 5 minutes