

LAMP1 RABBIT MAB

Cat.#: N262460

Product Name: Anti-LAMP1 Rabbit Monoclonal Antibody

Synonyms: LAMP1; Lysosome-associated membrane glycoprotein 1; LAMP-1; Lysosome-associated membrane protein 1; CD107 antigen-like family member A; CD107a

UNIPROT ID: P11279

Background: LAMP1 and LAMP2 (lysosome-associated membrane protein 1 and 2) are two abundant lysosomal membrane proteins. Both are transmembrane proteins and heavily glycosylated at the amino-terminal luminal side of the lysosomal inner leaflet, which protects the proteins from proteolysis. The carboxy terminus of LAMP1 is exposed to the cytoplasm and contains a tyrosine sorting motif which targets LAMP to lysosomal membranes.

Immunogen: A synthetic peptide of human LAMP1

Applications: WB,IHC-P

Recommended Dilutions: WB: 1/500-1/1000 IHC: 1/50-1/100

Host Species: Rabbit

Clonality: Rabbit Monoclonal

Clone ID: R05-7D4

MW: Calculated MW: 45 kDa; Observed MW: 90-120 kDa

Isotype: IgG

Purification: Affinity Purified

Species Reactivity: Human

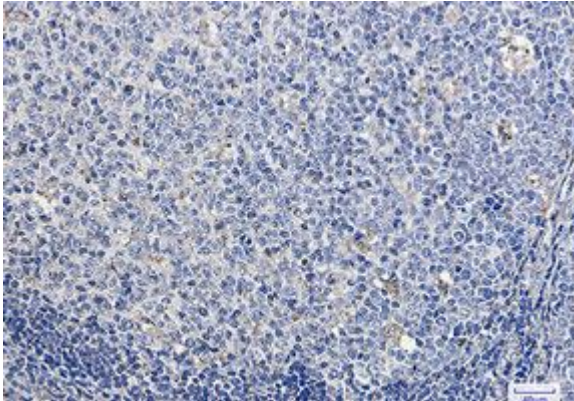
Conjugation: Unconjugated

Modification: Unmodified

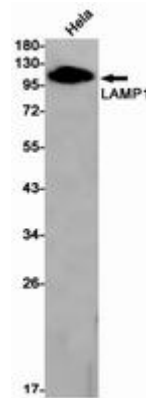
Constituents: PBS (without Mg²⁺ and Ca²⁺), pH 7.3 containing 50% glycerol, 0.5% BSA and 0.02% sodium azide

Research Areas: Autophagy Autophagosome

Storage & Shipping: Store at -20°C. Avoid repeated freezing and thawing



Immunohistochemistry analysis of paraffin-embedded Human tonsil using LAMP1 antibody. High-pressure and temperature Sodium Citrate pH 6.0 was used for antigen retrieval.



Western blot analysis of LAMP1 in Sodium HeLa lysates using LAMP1 antibody.