

## LAMIN B2 RABBIT MAB

**Cat.#:** N262458

**Product Name:** Anti-Lamin B2 Rabbit Monoclonal Antibody

**Synonyms:** LMN2; LAMB2

**UNIPROT ID:** Q03252

**Background:** Lamins are components of the nuclear lamina, a fibrous layer on the nucleoplasmic side of the inner nuclear membrane, which is thought to provide a framework for the nuclear envelope and may also interact with chromatin.

**Immunogen:** A synthetic peptide of human Lamin B2

**Applications:** WB,IHC-F,IHC-P,ICC/IF,IP

**Recommended Dilutions:** WB: 1/500-1/1000 IHC: 1/50-1/100 IF: 1/50-1/200 IP: 1/20

**Host Species:** Rabbit

**Clonality:** Rabbit Monoclonal

**Clone ID:** R02-2J2

**MW:** Calculated MW: 70 kDa; Observed MW: 70 kDa

**Isotype:** IgG

**Purification:** Affinity Purified

**Species Reactivity:** Human,Mouse,Rat

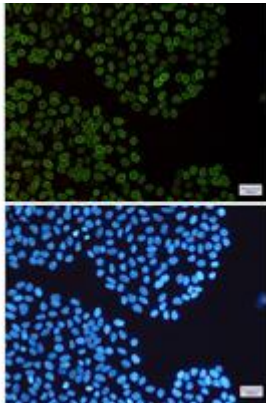
**Conjugation:** Unconjugated

**Modification:** Unmodified

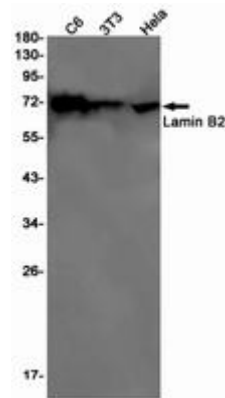
**Constituents:** PBS (without Mg<sup>2+</sup> and Ca<sup>2+</sup>), pH 7.3 containing 50% glycerol, 0.5% BSA and 0.02% sodium azide

**Research Areas:** Cell Biology

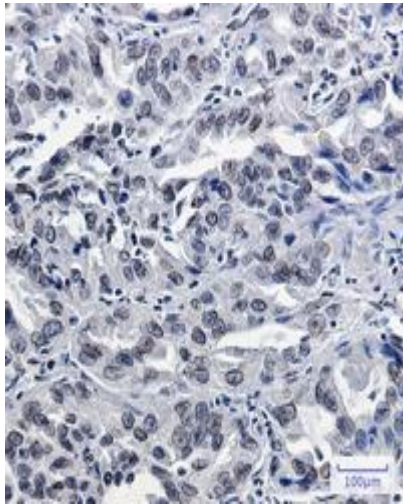
**Storage & Shipping:** Store at -20°C. Avoid repeated freezing and thawing



Immunocytochemistry analysis of Lamin B2 (green) in HeLa using Lamin B2 antibody, and DAPI (blue)



Western blot analysis of Lamin B2 in C6, 3T3, HeLa lysates using Lamin B2 antibody.



Immunohistochemistry analysis of paraffin-embedded Human lung cancer using Lamin B2 antibody. High-pressure and temperature Sodium Citrate pH 6.0 was used for antigen retrieval.