

LAMIN B RECEPTOR RABBIT PAB

Cat.#: N225658

Product Name: Anti-Lamin B Receptor Rabbit pAb

Synonyms: PHA; LMN2R; TDRD18; DHCR14B; LBR

UNIPROT ID: Q14739

Background: The protein encoded by this gene belongs to the ERG4/ERG24 family. It localized in the nuclear envelope inner membrane and anchors the lamina and the heterochromatin to the membrane. It may mediate interaction between chromatin and lamin B. Mutations of this gene has been associated with autosomal recessive HEM/Greenberg skeletal dysplasia. Alternative splicing occurs at this locus and two transcript variants encoding the same protein have been identified.

Immunogen: A synthesized peptide derived from human Lamin B Receptor

Applications: WB,IHC-P,ICC/IF,IP

Recommended Dilutions: WB: 1/500-1/1000 IHC: 1/50-1/100 IF: 1/50-1/200 IP: 1/20

Host Species: Rabbit

Clonality: Rabbit Polyclonal

Clone ID: -

MW: Calculated MW: 71 kDa; Observed MW: 71 kDa

Isotype: IgG

Purification: Affinity Chromatography

Species Reactivity: Human,Rat

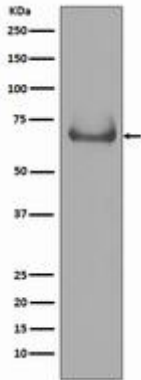
Conjugation: Unconjugated

Modification: Unmodified

Constituents: PBS (without Mg²⁺ and Ca²⁺), pH 7.3 containing 50% glycerol, 0.5% BSA and 0.02% sodium azide

Research Areas: Tags & Cell Markers

Storage & Shipping: Store at -20°C. Avoid repeated freezing and thawing



Western blot analysis of Lamin B Receptor in Jurkat lysates using Lamin B Receptor antibody.