

LAMIN A/C RABBIT MAB

Cat.#: N262455

Product Name: Anti-Lamin A/C Rabbit Monoclonal Antibody

Synonyms: LMNA; LMN1; Prelamin-A/C

UNIPROT ID: P02545

Background: Lamins are components of the nuclear lamina, a fibrous layer on the nucleoplasmic side of the inner nuclear membrane, which is thought to provide a framework for the nuclear envelope and may also interact with chromatin. Lamin A and C are present in equal amounts in the lamina of mammals. Play an important role in nuclear assembly, chromatin organization, nuclear membrane and telomere dynamics.

Prelamin-A/C can accelerate smooth muscle cell senescence. It acts to disrupt mitosis and induce DNA damage in vascular smooth muscle cells (VSMCs), leading to mitotic failure, genomic instability, and premature senescence.

Immunogen: A synthetic peptide of human Lamin A/C

Applications: WB,IHC-F,IHC-P,ICC/IF,IP

Recommended Dilutions: WB: 1/500-1/1000 IHC: 1/50-1/100 IF: 1/50-1/200 IP: 1/20

Host Species: Rabbit

Clonality: Rabbit Monoclonal

Clone ID: R06-7H5

MW: Calculated MW: 74 kDa; Observed MW: 74,63 kDa

Isotype: IgG

Purification: Affinity Purified

Species Reactivity: Human,Mouse,Rat

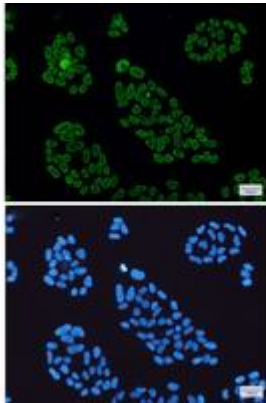
Conjugation: Unconjugated

Modification: Unmodified

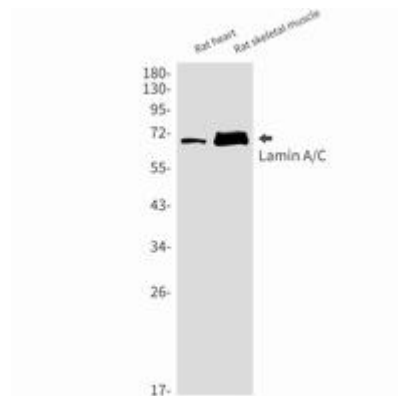
Constituents: PBS (without Mg²⁺ and Ca²⁺), pH 7.3 containing 50% glycerol, 0.5% BSA and 0.02% sodium azide

Research Areas: apoptosis - Caspase family

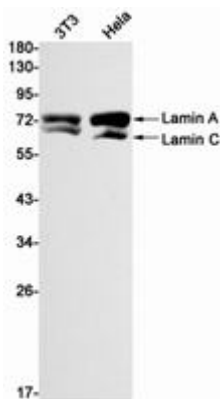
Storage & Shipping: Store at -20°C. Avoid repeated freezing and thawing



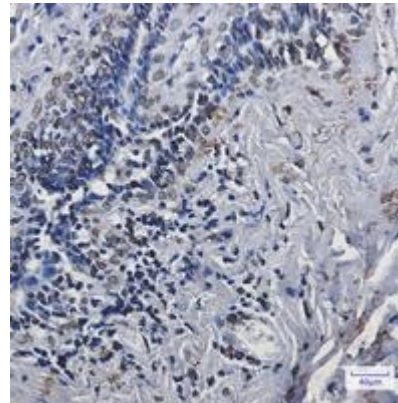
Immunocytochemistry analysis of Lamin A/C (green) in HeLa using Lamin A/C antibody, and DAPI (blue)



Western blot analysis of Lamin A/C in rat heart, rat skeletal muscle lysates using Lamin A/C antibody.



Western blot analysis of Lamin A/C in 3T3, HeLa lysates using Lamin A/C antibody.



Immunohistochemistry analysis of paraffin-embedded Human breast cancer using Lamin A/C antibody. High-pressure and temperature Sodium Citrate pH 6.0 was used for antigen retrieval.