

KRTAP1-1 RABBIT PAB

Cat.#: S222335

Product Name: Anti-KRTAP1-1 Rabbit Polyclonal Antibody

Synonyms: HB2A; KAP1.1; KAP1.6; KAP1.7; KAP1.1A; KAP1.1B; KRTAP1A; hKAP1.7; KRTAP1.1

UNIPROT ID: Q07627 (Gene Accession - NP_112229)

Background: This protein is a member of the keratin-associated protein (KAP) family. The KAP proteins form a matrix of keratin intermediate filaments which contribute to the structure of hair fibers. KAP family members appear to have unique, family-specific amino- and carboxyl-terminal regions and are subdivided into three multi-gene families according to amino acid composition: the high sulfur, the ultrahigh sulfur, and the high tyrosine/glycine KAPs. This protein is a member of the high sulfur KAP family and the gene is localized to a cluster of KAPs at 17q12-q21.

Immunogen: Synthetic peptide of human KRTAP1-1

Applications: ELISA, IHC

Recommended Dilutions: IHC: 25-50; ELISA: 500-1000

Host Species: Rabbit

Clonality: Rabbit Polyclonal

Isotype: Immunogen-specific rabbit IgG

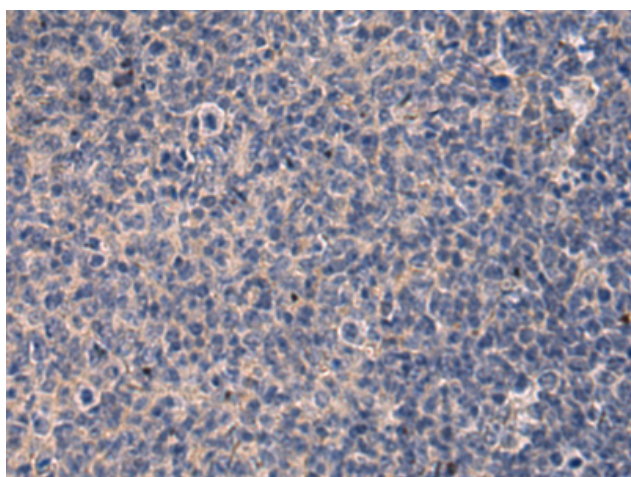
Purification: Antigen affinity purification

Species Reactivity: Human

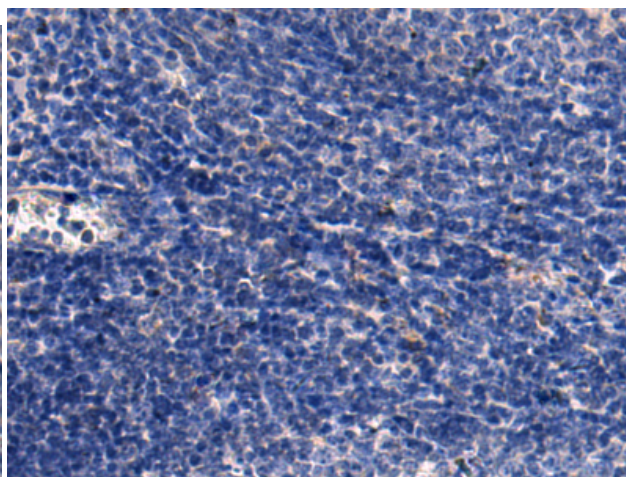
Constituents: PBS (without Mg²⁺ and Ca²⁺), pH 7.4, 150 mM NaCl, 0.05% Sodium Azide and 40% glycerol

Research Areas: Signal Transduction

Storage & Shipping: Store at -20°C. Avoid repeated freezing and thawing



Immunohistochemistry analysis of paraffin embedded Human tonsil using 222335(KRTAP1-1 Antibody) at a dilution of 1/20(Cytoplasm).



In comparison with the IHC on the left, the same paraffin-embedded Human tonsil is first treated with the synthetic peptide and then with 222335(Anti-KRTAP1-1 Antibody) at dilution 1/20.