

## KRT81 RABBIT PAB

**Cat.#:** S210139

**Product Name:** Anti-KRT81 Rabbit Polyclonal Antibody

**Synonyms:** HB1; Hb-1; KRTHB1; MLN137; ghHkb1; hHAKB2-1

**UNIPROT ID:** Q14533 (Gene Accession - BC117465 )

**Background:** The protein encoded by this gene is a member of the keratin gene family. As a type II hair keratin, it is a basic protein which heterodimerizes with type I keratins to form hair and nails. The type II hair keratins are clustered in a region of chromosome 12q13 and are grouped into two distinct subfamilies based on structure similarity. One subfamily, consisting of KRTHB1, KRTHB3, and KRTHB6, is highly related. The other less-related subfamily includes KRTHB2, KRTHB4, and KRTHB5. All hair keratins are expressed in the hair follicle; this hair keratin, as well as KRTHB3 and KRTHB6, is found primarily in the hair cortex. Mutations in this gene and KRTHB6 have been observed in patients with a rare dominant hair disease, monilethrix.

**Immunogen:** Fusion protein of human KRT81

**Applications:** ELISA, WB, IHC

**Recommended Dilutions:** IHC: 50-200;WB: 200-1000;ELISA: 5000-10000

**Host Species:** Rabbit

**Clonality:** Rabbit Polyclonal

**Isotype:** Immunogen-specific rabbit IgG

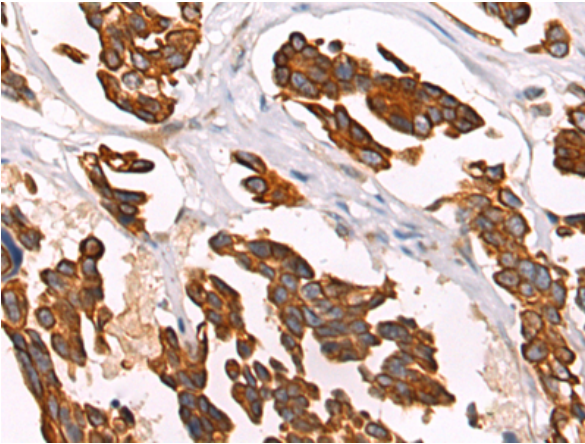
**Purification:** Antigen affinity purification

**Species Reactivity:** Human, Mouse

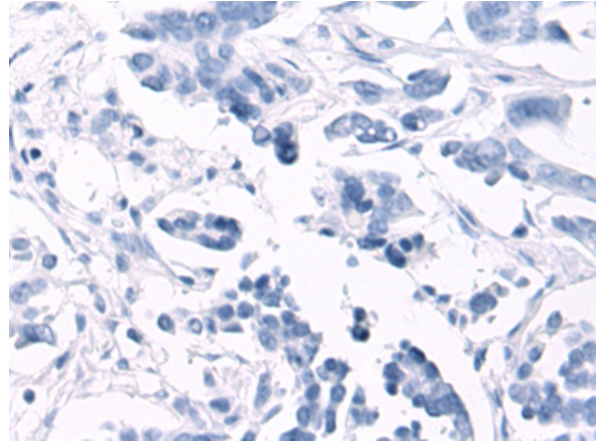
**Constituents:** PBS (without Mg<sup>2+</sup> and Ca<sup>2+</sup>), pH 7.4, 150 mM NaCl, 0.05% Sodium Azide and 40% glycerol

**Research Areas:** Signal Transduction

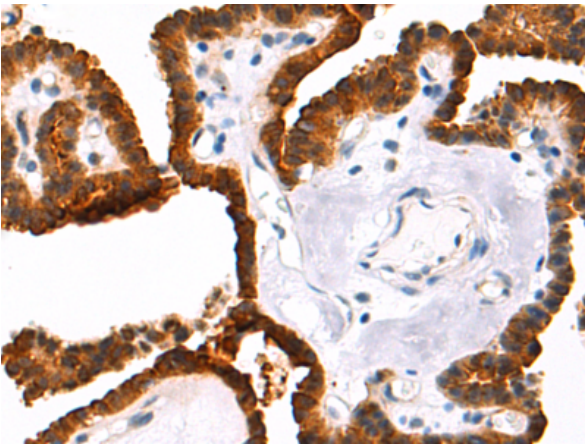
**Storage & Shipping:** Store at -20°C. Avoid repeated freezing and thawing



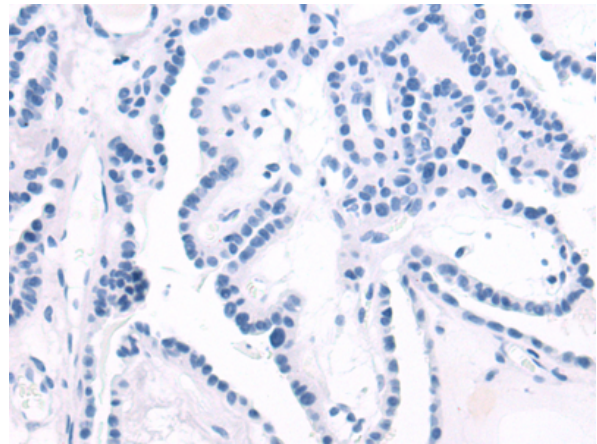
Immunohistochemistry analysis of paraffin embedded Human colorectal cancer tissue using 210139 (KRT81 Antibody) at a dilution of 1/55 (Cytoplasm).



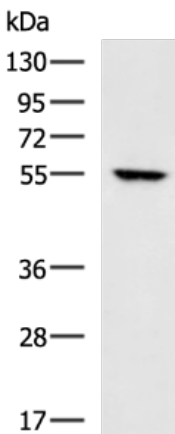
In comparison with the IHC on the left, the same paraffin-embedded Human colorectal cancer tissue is first treated with the fusion protein and then with 210139 (Anti-KRT81 Antibody) at dilution 1/55.



The image on the left is immunohistochemistry of paraffin-embedded Human thyroid cancer tissue using 210139 (Anti-KRT81 Antibody) at a dilution of 1/55.



In comparison with the IHC on the left, the same paraffin-embedded Human thyroid cancer tissue is first treated with fusion protein and then with D120240 (Anti-KRT81 Antibody) at dilution 1/55.



Gel: 8% SDS-PAGE, Lysate: 40 µg;  
Lane: HeLa cell lysate;  
Primary antibody: 210139 (KRT81 Antibody) at dilution 1/400;  
Secondary antibody: HRP-conjugated Goat anti rabbit IgG at 1/5000 dilution;  
Exposure time: 5 minutes



# Product Description

Pioneering GTPase and Oncogene Product Development since 2010

---