

## KRT8 RABBIT PAB

**Cat.#:** S216336

**Product Name:** Anti-KRT8 Rabbit Polyclonal Antibody

**Synonyms:** K8; KO; CK8; CK-8; CYK8; K2C8; CARD2

**UNIPROT ID:** P05787 (Gene Accession - BC008200 )

**Background:** This gene is a member of the type II keratin family clustered on the long arm of chromosome 12. Type I and type II keratins heteropolymerize to form intermediate-sized filaments in the cytoplasm of epithelial cells. The product of this gene typically dimerizes with keratin 18 to form an intermediate filament in simple single-layered epithelial cells. This protein plays a role in maintaining cellular structural integrity and also functions in signal transduction and cellular differentiation. Mutations in this gene cause cryptogenic cirrhosis. Alternatively spliced transcript variants have been found for this gene.

**Immunogen:** Fusion protein of human KRT8

**Applications:** ELISA, IHC

**Recommended Dilutions:** IHC: 50-200; ELISA: 2000-5000

**Host Species:** Rabbit

**Clonality:** Rabbit Polyclonal

**Isotype:** Immunogen-specific rabbit IgG

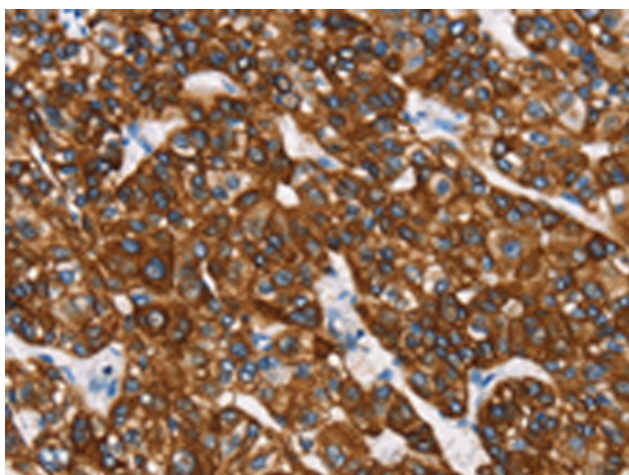
**Purification:** Antigen affinity purification

**Species Reactivity:** Human, Mouse, Rat

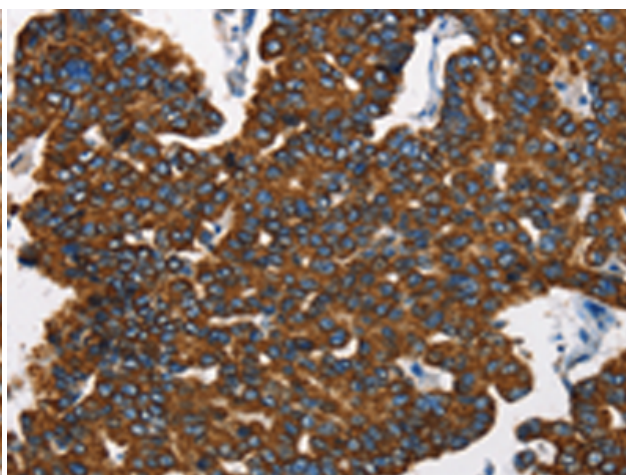
**Constituents:** PBS (without Mg<sup>2+</sup> and Ca<sup>2+</sup>), pH 7.4, 150 mM NaCl, 0.05% Sodium Azide and 40% glycerol

**Research Areas:** Signal Transduction

**Storage & Shipping:** Store at -20°C. Avoid repeated freezing and thawing



Immunohistochemistry analysis of paraffin-embedded Human liver cancer tissue using 216336(KRT8 Antibody) at a dilution of 1/40(Cell membrane and Cytoplasm).



Immunohistochemistry analysis of paraffin-embedded Human breast cancer tissue using 216336(Anti-KRT8 Antibody) at a dilution of 1/40.