

KRT6A/KRT6B/KRT6C RABBIT PAB

Cat.#: S219700

Product Name: Anti-KRT6A/KRT6B/KRT6C Rabbit Polyclonal Antibody

Synonyms: K6A; K6C; K6D; CK6A; CK6C; CK6D; KRT6C; KRT6D; K6B; PC2; CK6B; CK-6B; KRTL1; K6E; KRT6E

UNIPROT ID: P02538/P04259/P48668 (Gene Accession - NP_005545.1/NP_005546.2/NP_775109.2)

Background: The protein encoded by this gene is a member of the keratin gene family. The type II cytokeratins consist of basic or neutral proteins which are arranged in pairs of heterotypic keratin chains coexpressed during differentiation of simple and stratified epithelial tissues. As many as six of this type II cytokeratin (KRT6) have been identified; the multiplicity of the genes is attributed to successive gene duplication events. The genes are expressed with family members KRT16 and/or KRT17 in the filiform papillae of the tongue, the stratified epithelial lining of oral mucosa and esophagus, the outer root sheath of hair follicles, and the glandular epithelia. This KRT6 gene in particular encodes the most abundant isoform. Mutations in these genes have been associated with pachyonychia congenita. The type II cytokeratins are clustered in a region of chromosome 12q12-q13.

Immunogen: Synthetic peptide of human KRT6A/KRT6B/KRT6C

Applications: ELISA, IHC

Recommended Dilutions: IHC: 50-200; ELISA: 2000-5000

Host Species: Rabbit

Clonality: Rabbit Polyclonal

Isotype: Immunogen-specific rabbit IgG

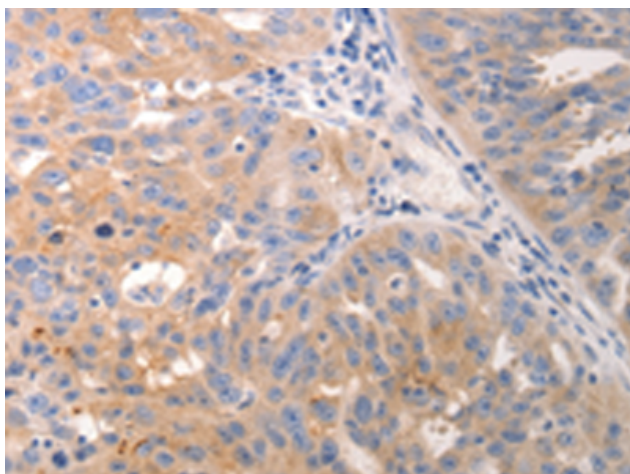
Purification: Antigen affinity purification

Species Reactivity: Human, Mouse

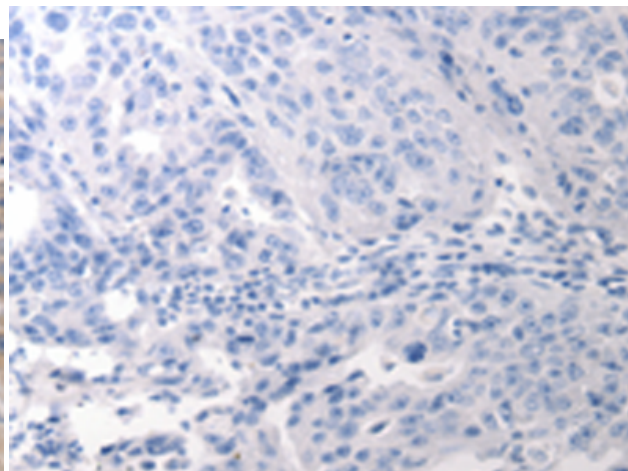
Constituents: PBS (without Mg²⁺ and Ca²⁺), pH 7.4, 150 mM NaCl, 0.05% Sodium Azide and 40% glycerol

Research Areas: Signal Transduction, Immunology

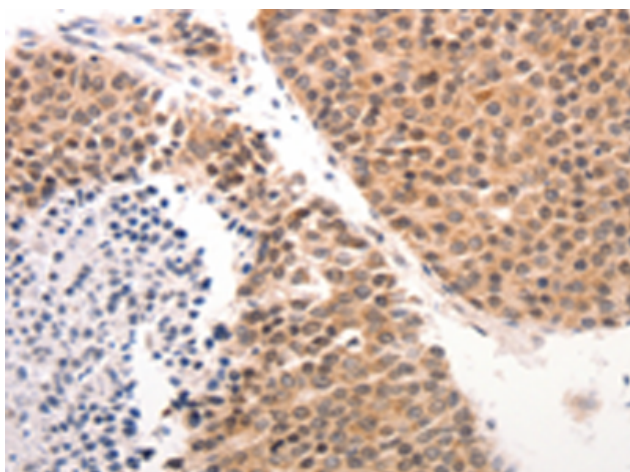
Storage & Shipping: Store at -20°C. Avoid repeated freezing and thawing



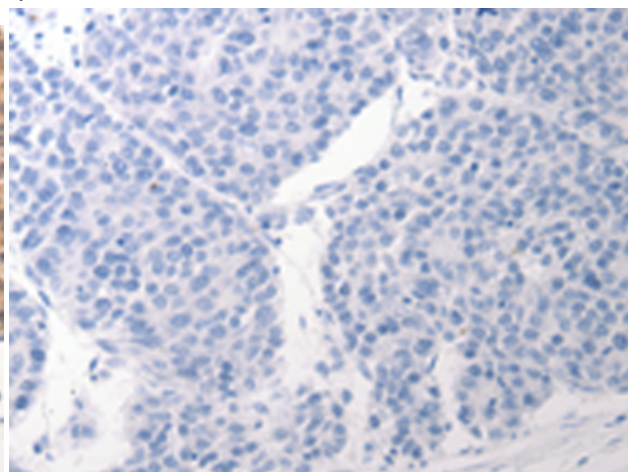
Immunohistochemistry analysis of paraffin embedded Human breast cancer tissue using 219700(KRT6A/KRT6B/KRT6C Antibody) at a dilution of 1/50(Cytoplasm).



In comparison with the IHC on the left, the same paraffin-embedded Human breast cancer tissue is first treated with the synthetic peptide and then with 219700(Anti-KRT6A/KRT6B/KRT6C Antibody) at dilution 1/50.



The image on the left is immunohistochemistry of paraffin-embedded Human ovarian cancer tissue using 219700(Anti-KRT6A/KRT6B/KRT6C Antibody) at a dilution of 1/50.



In comparison with the IHC on the left, the same paraffin-embedded Human ovarian cancer tissue is first treated with synthetic peptide and then with D260177(Anti-KRT6A/KRT6B/KRT6C Antibody) at dilution 1/50.