

KRT17 RABBIT PAB

Cat.#: S216337

Product Name: Anti-KRT17 Rabbit Polyclonal Antibody

Synonyms: PC; K17; PC2; 39.1; CK-17; PCHC1

UNIPROT ID: Q04695 (Gene Accession - BC000159)

Background: This gene encodes the type I intermediate filament chain keratin 17, expressed in nail bed, hair follicle, sebaceous glands, and other epidermal appendages. Mutations in this gene lead to Jackson-Lawler type pachyonychia congenita and steatocystoma multiplex.

Immunogen: Fusion protein of human KRT17

Applications: ELISA, IHC

Recommended Dilutions: IHC: 25-100; ELISA: 5000-10000

Host Species: Rabbit

Clonality: Rabbit Polyclonal

Isotype: Immunogen-specific rabbit IgG

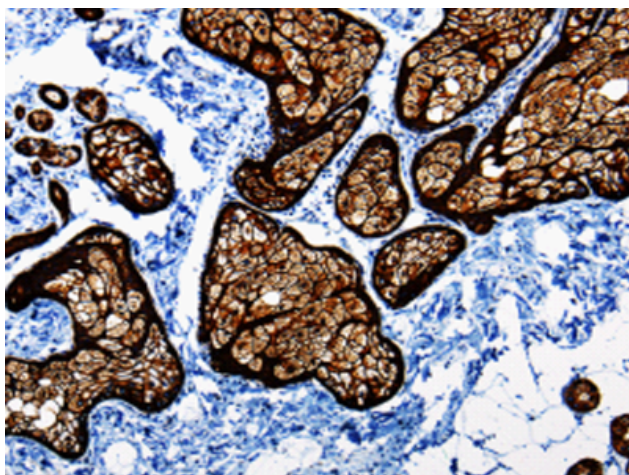
Purification: Antigen affinity purification

Species Reactivity: Human, Mouse, Rat

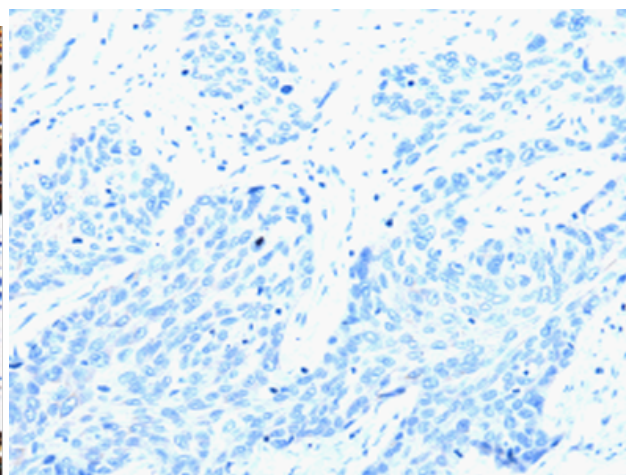
Constituents: PBS (without Mg²⁺ and Ca²⁺), pH 7.4, 150 mM NaCl, 0.05% Sodium Azide and 40% glycerol

Research Areas: Signal Transduction

Storage & Shipping: Store at -20°C. Avoid repeated freezing and thawing



Immunohistochemistry analysis of paraffin embedded Human skin tissue using 216337(KRT17 Antibody) at a dilution of 1/30(Cell membrane, Cytoplasm).



In comparison with the IHC on the left, the same paraffin-embedded Human skin tissue is first treated with the fusion protein and then with 216337(Anti-KRT17 Antibody) at dilution 1/30.