

## KRR1 RABBIT PAB

**Cat.#:** S218869

**Product Name:** Anti-KRR1 Rabbit Polyclonal Antibody

**Synonyms:** HRB2; RIP-1

**UNIPROT ID:** Q13601 (Gene Accession - BC016778 )

**Background:** The SSU is a large ribonucleoprotein consisting of at least 40 proteins and the U3 small nucleolar RNA. It is involved in pre-rRNA processing and ribosome assembly. The SSU is necessary for the biogenesis of the 18S rRNA. Cells that are depleted of SSU proteins will arrest in the G1 phase of the cell cycle. KRR1, also known as HRB2 (HIV-1 Rev binding protein 2) or RIP-1 (Rev interacting protein 1), is a nonribosomal component of the small subunit processome (SSU). KRR1 is 381 amino acids in length and is evolutionarily conserved among human, yeast, fly, nematode and rice. KRR1 localizes to the nucleolus and is highly expressed in dividing cells. It contains one conserved KH domain (RNA-binding motif) and is a crucial component of the SSU, required for both rRNA maturation and ribosome biogenesis.

**Immunogen:** Fusion protein of human KRR1

**Applications:** ELISA, WB, IHC

**Recommended Dilutions:** IHC: 50-300;WB: 200-1000;ELISA: 5000-10000

**Host Species:** Rabbit

**Clonality:** Rabbit Polyclonal

**Isotype:** Immunogen-specific rabbit IgG

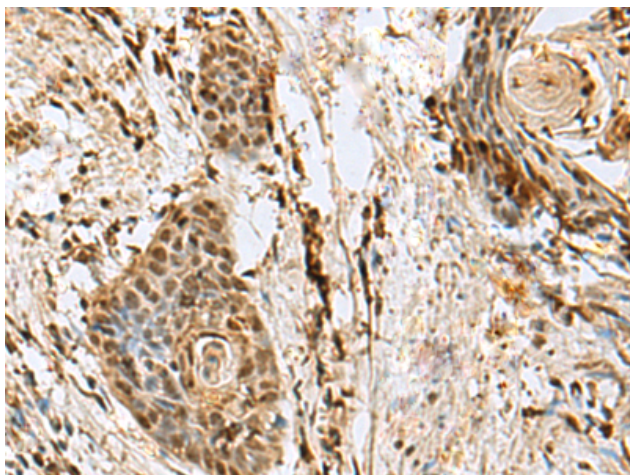
**Purification:** Antigen affinity purification

**Species Reactivity:** Human, Mouse

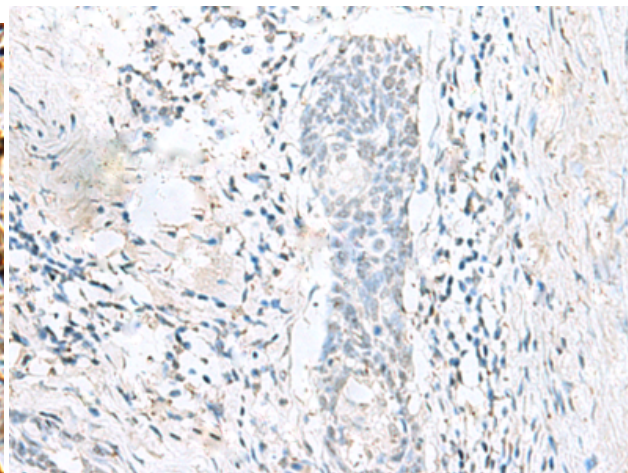
**Constituents:** PBS (without Mg<sup>2+</sup> and Ca<sup>2+</sup>), pH 7.4, 150 mM NaCl, 0.05% Sodium Azide and 40% glycerol

**Research Areas:** Epigenetics and Nuclear Signaling, Immunology

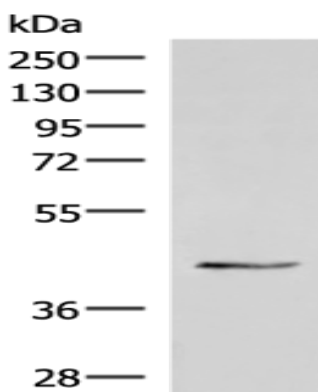
**Storage & Shipping:** Store at -20°C. Avoid repeated freezing and thawing



Immunohistochemistry analysis of paraffin embedded Human esophagus cancer tissue using 218869(KRR1 Antibody) at a dilution of 1/60(Nucleus).



In comparison with the IHC on the left, the same paraffin-embedded Human esophagus cancer tissue is first treated with the fusion protein and then with 218869(Anti-KRR1 Antibody) at dilution 1/60.



Gel: 8%SDS-PAGE, Lysate: 40  $\mu$ g;  
Lane: Human heart tissue lysate ;  
Primary antibody: 218869(KRR1 Antibody) at dilution 1/250;  
Secondary antibody: HRP-conjugated Goat anti rabbit IgG at 1/5000 dilution;  
Exposure time: 7 seconds