

## KPNB1 RABBIT PAB

**Cat.#:** S214412

**Product Name:** Anti-KPNB1 Rabbit Polyclonal Antibody

**Synonyms:** IMBI; IPO1; IPOB; Impnb; NTF97

**UNIPROT ID:** Q14974 (Gene Accession - NP\_002256 )

**Background:** Nucleocytoplasmic transport, a signal- and energy-dependent process, takes place through nuclear pore complexes embedded in the nuclear envelope. The import of proteins containing a nuclear localization signal (NLS) requires the NLS import receptor, a heterodimer of importin alpha and beta subunits also known as karyopherins. Importin alpha binds the NLS-containing cargo in the cytoplasm and importin beta docks the complex at the cytoplasmic side of the nuclear pore complex. In the presence of nucleoside triphosphates and the small GTP binding protein Ran, the complex moves into the nuclear pore complex and the importin subunits dissociate. Importin alpha enters the nucleoplasm with its passenger protein and importin beta remains at the pore.

**Immunogen:** Synthetic peptide of human KPNB1

**Applications:** ELISA, IHC

**Recommended Dilutions:** IHC: 50–200; ELISA: 2000–10000

**Host Species:** Rabbit

**Clonality:** Rabbit Polyclonal

**Isotype:** Immunogen-specific rabbit IgG

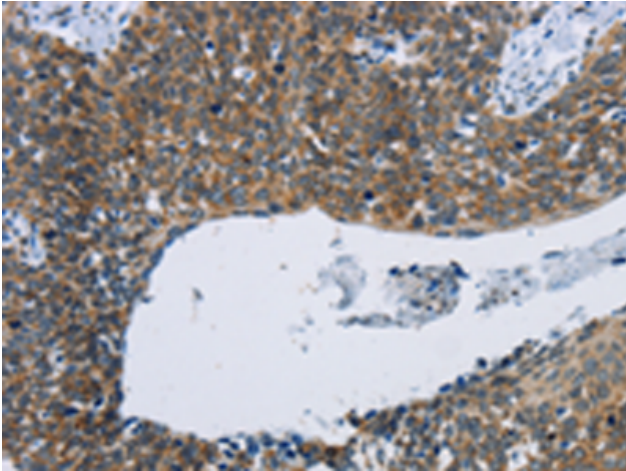
**Purification:** Antigen affinity purification

**Species Reactivity:** Human, Mouse, Rat

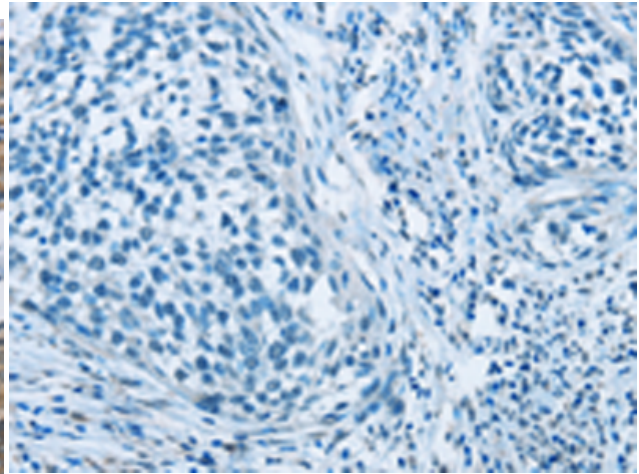
**Constituents:** PBS (without Mg<sup>2+</sup> and Ca<sup>2+</sup>), pH 7.4, 150 mM NaCl, 0.05% Sodium Azide and 40% glycerol

**Research Areas:** Signal Transduction, Epigenetics and Nuclear Signaling

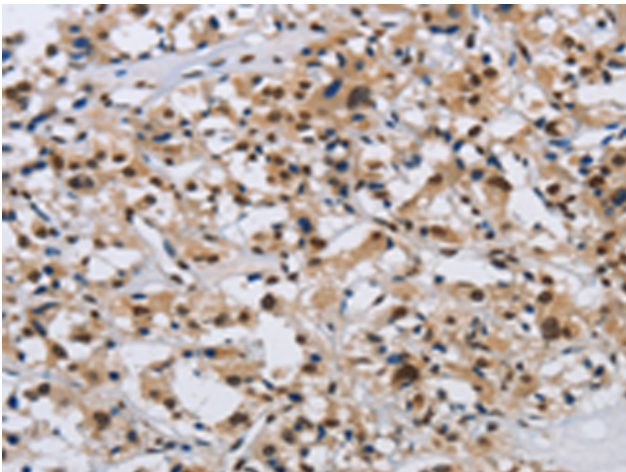
**Storage & Shipping:** Store at –20°C. Avoid repeated freezing and thawing



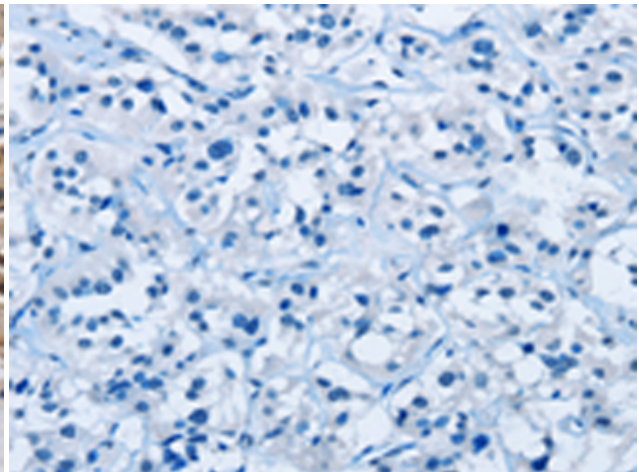
Immunohistochemistry analysis of paraffin embedded Human cervical cancer tissue using 214412(KPNB1 Antibody) at a dilution of 1/40(Cytoplasm or Nucleus).



In comparison with the IHC on the left, the same paraffin-embedded Human cervical cancer tissue is first treated with the synthetic peptide and then with 214412(Anti-KPNB1 Antibody) at dilution 1/40.



The image on the left is immunohistochemistry of paraffin-embedded Human thyroid cancer tissue using 214412(Anti-KPNB1 Antibody) at a dilution of 1/40.



In comparison with the IHC on the left, the same paraffin-embedded Human thyroid cancer tissue is first treated with synthetic peptide and then with D161792(Anti-KPNB1 Antibody) at dilution 1/40.