

## KMT6 RABBIT MAB

**Cat.#:** N262450

**Product Name:** Anti-KMT6 Rabbit Monoclonal Antibody

**Synonyms:** WVS; ENX1; KMT6; WVS2; ENX-1; EZH2b; KMT6A; EZH2

**UNIPROT ID:** Q15910

**Background:** Polycomb group (PcG) protein. Catalytic subunit of the PRC2/EED-EZH2 complex, which methylates 'Lys-9' and 'Lys-27' of histone H3, leading to transcriptional repression of the affected target gene. Able to mono-, di- and trimethylate 'Lys-27' of histone H3 to form H3K27me1, H3K27me2 and H3K27me3, respectively. Compared to EZH2-containing complexes, it is more abundant in embryonic stem cells and plays a major role in forming H3K27me3, which is required for embryonic stem cell identity and proper differentiation.

**Immunogen:** A synthetic peptide of human KMT6/EZH2

**Applications:** WB, ICC/IF

**Recommended Dilutions:** WB: 1/500-1/1000 IF: 1/50-1/200

**Host Species:** Rabbit

**Clonality:** Rabbit Monoclonal

**Clone ID:** R07-5B1

**MW:** Calculated MW: 85 kDa; Observed MW: 98 kDa

**Isotype:** IgG

**Purification:** Affinity Purified

**Species Reactivity:** Human, Mouse, Rat

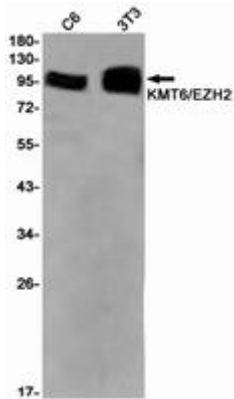
**Conjugation:** Unconjugated

**Modification:** Unmodified

**Constituents:** PBS (without Mg<sup>2+</sup> and Ca<sup>2+</sup>), pH 7.3 containing 50% glycerol, 0.5% BSA and 0.02% sodium azide

**Research Areas:** Epigenetics and Nuclear Signaling

**Storage & Shipping:** Store at -20°C. Avoid repeated freezing and thawing



Western blot analysis of KMT6/EZH2 in C6, 3T3 lysates using KMT6 antibody.