

KLRF1 RABBIT PAB

Cat.#: S220663

Product Name: Anti-KLRF1 Rabbit Polyclonal Antibody

Synonyms: NKp80; CLEC5C

UNIPROT ID: Q9NZS2 (Gene Accession - NP_057607)

Background: KLRF1, an activating homodimeric C-type lectin-like receptor (CLR), is expressed on nearly all natural killer (NK) cells and stimulates their cytotoxicity and cytokine release

Immunogen: Synthetic peptide of human KLRF1

Applications: ELISA, IHC

Recommended Dilutions: IHC: 50-200; ELISA: 2000-5000

Host Species: Rabbit

Clonality: Rabbit Polyclonal

Isotype: Immunogen-specific rabbit IgG

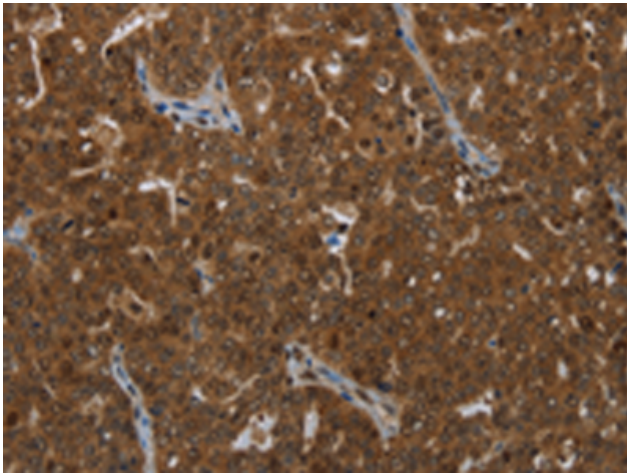
Purification: Antigen affinity purification

Species Reactivity: Human

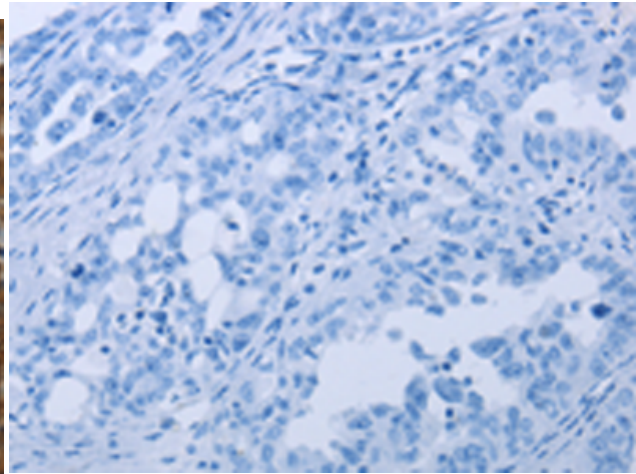
Constituents: PBS (without Mg²⁺ and Ca²⁺), pH 7.4, 150 mM NaCl, 0.05% Sodium Azide and 40% glycerol

Research Areas: Immunology

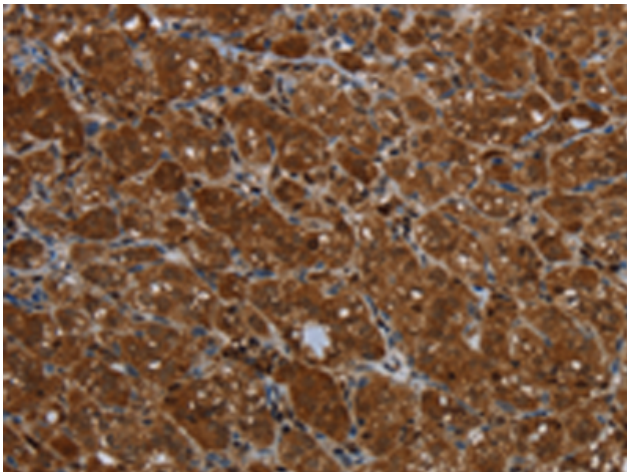
Storage & Shipping: Store at -20°C. Avoid repeated freezing and thawing



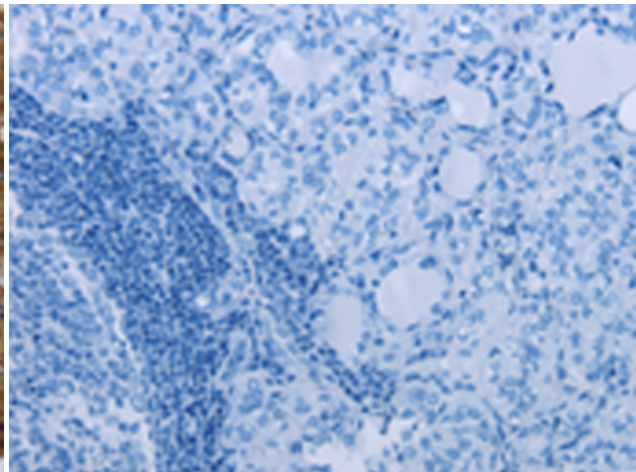
Immunohistochemistry analysis of paraffin embedded Human ovarian cancer tissue using 220663(KLRF1 Antibody) at a dilution of 1/25(Cytoplasm or Nucleus).



In comparison with the IHC on the left, the same paraffin-embedded Human ovarian cancer tissue is first treated with the synthetic peptide and then with 220663(Anti-KLRF1 Antibody) at dilution 1/25.



The image on the left is immunohistochemistry of paraffin-embedded Human thyroid cancer tissue using 220663(Anti-KLRF1 Antibody) at a dilution of 1/25.



In comparison with the IHC on the left, the same paraffin-embedded Human thyroid cancer tissue is first treated with synthetic peptide and then with D261842(Anti-KLRF1 Antibody) at dilution 1/25.