

KLHDC2 RABBIT PAB

Cat.#: S218687

Product Name: Anti-KLHDC2 Rabbit Polyclonal Antibody

Synonyms: LCP; HCLP1; HCLP-1

UNIPROT ID: Q9Y2U9 (Gene Accession - BC002335)

Background: Represses CREB3-mediated transcription by interfering with CREB3-DNA binding.

Immunogen: Fusion protein of human KLHDC2

Applications: ELISA, IHC

Recommended Dilutions: IHC: 30-150; ELISA: 5000-10000

Host Species: Rabbit

Clonality: Rabbit Polyclonal

Isotype: Immunogen-specific rabbit IgG

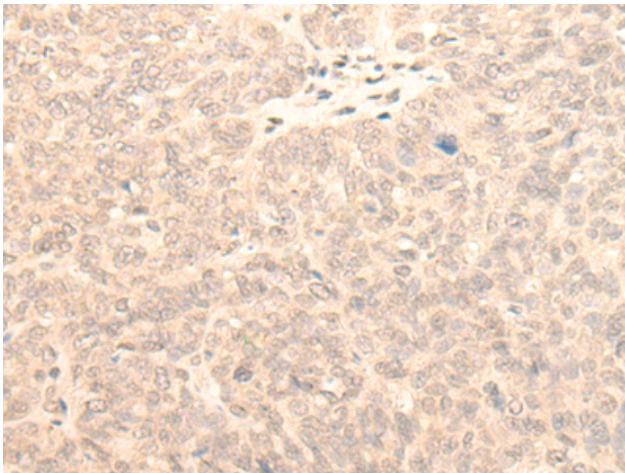
Purification: Antigen affinity purification

Species Reactivity: Human, Mouse, Rat

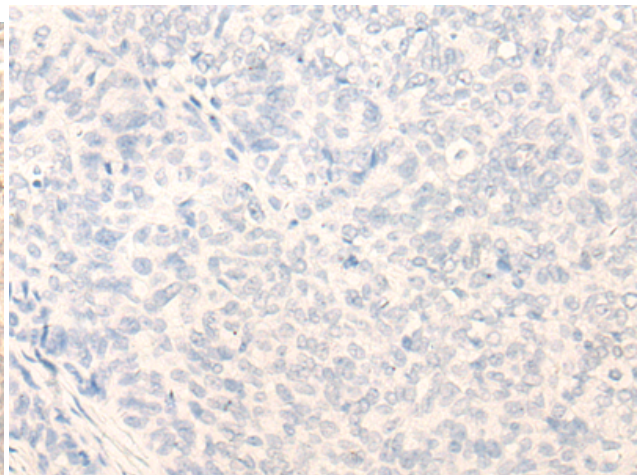
Constituents: PBS (without Mg²⁺ and Ca²⁺), pH 7.4, 150 mM NaCl, 0.05% Sodium Azide and 40% glycerol

Research Areas: Epigenetics and Nuclear Signaling

Storage & Shipping: Store at -20°C. Avoid repeated freezing and thawing



Immunohistochemistry analysis of paraffin embedded Human ovarian cancer tissue using 218687(KLHDC2 Antibody) at a dilution of 1/20(Nucleus).



In comparison with the IHC on the left, the same paraffin-embedded Human ovarian cancer tissue is first treated with the fusion protein and then with 218687(Anti-KLHDC2 Antibody) at dilution 1/20.