

## KLF5 RABBIT PAB

**Cat.#:** S213622

**Product Name:** Anti-KLF5 Rabbit Polyclonal Antibody

**Synonyms:** CKLF; IKLF; BTEB2

**UNIPROT ID:** Q13887 (Gene Accession - NP\_001721 )

**Background:** This gene encodes a member of the Kruppel-like factor subfamily of zinc finger proteins. The encoded protein is a transcriptional activator that binds directly to a specific recognition motif in the promoters of target genes. This protein acts downstream of multiple different signaling pathways and is regulated by post-translational modification. It may participate in both promoting and suppressing cell proliferation. Expression of this gene may be changed in a variety of different cancers and in cardiovascular disease. Alternative splicing results in multiple transcript variants.

**Immunogen:** Synthetic peptide of human KLF5

**Applications:** ELISA, WB, IHC

**Recommended Dilutions:** IHC: 100-300;WB: 500-2000;ELISA: 1000-5000

**Host Species:** Rabbit

**Clonality:** Rabbit Polyclonal

**Isotype:** Immunogen-specific rabbit IgG

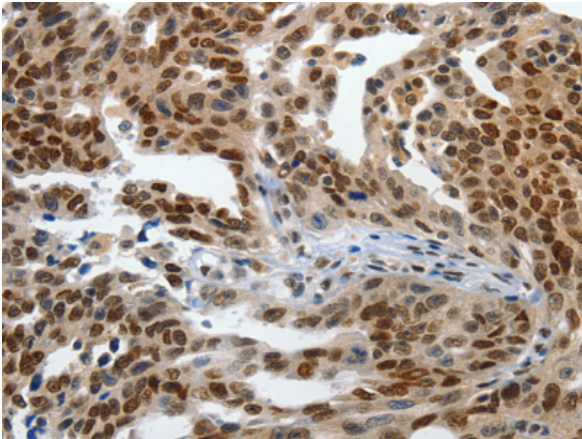
**Purification:** Antigen affinity purification

**Species Reactivity:** Human, Mouse

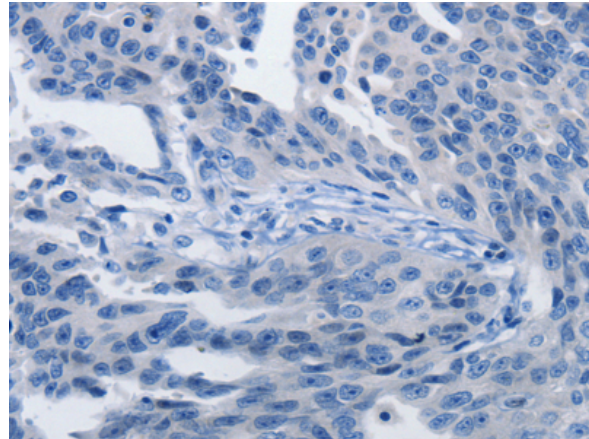
**Constituents:** PBS (without Mg<sup>2+</sup> and Ca<sup>2+</sup>), pH 7.4, 150 mM NaCl, 0.05% Sodium Azide and 40% glycerol

**Research Areas:** Epigenetics and Nuclear Signaling, Cancer, Cardiovascular, Stem Cells

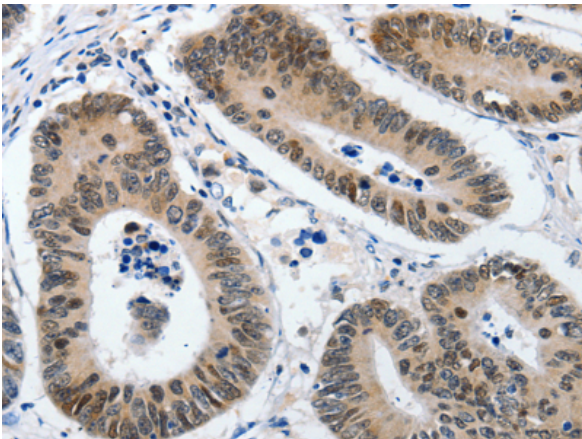
**Storage & Shipping:** Store at -20°C. Avoid repeated freezing and thawing



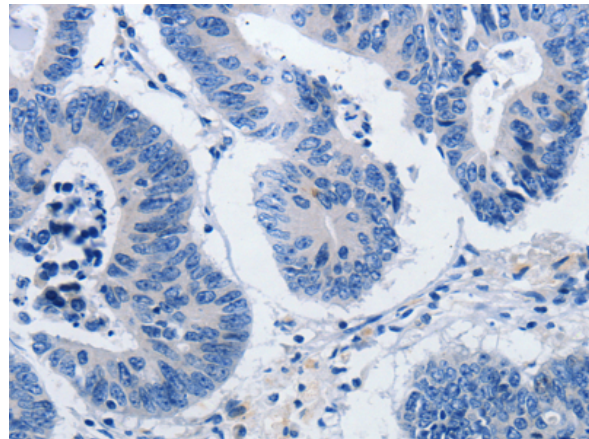
Immunohistochemistry analysis of paraffin embedded Human ovarian cancer tissue using 213622(KLF5 Antibody) at a dilution of 1/120(Cytoplasm, Nucleus).



In comparison with the IHC on the left, the same paraffin-embedded Human ovarian cancer tissue is first treated with the synthetic peptide and then with 213622(Anti-KLF5 Antibody) at dilution 1/120.



The image on the left is immunohistochemistry of paraffin-embedded Human colon cancer tissue using 213622(Anti-KLF5 Antibody) at a dilution of 1/120.



In comparison with the IHC on the left, the same paraffin-embedded Human colon cancer tissue is first treated with synthetic peptide and then with D160534(Anti-KLF5 Antibody) at dilution 1/120.



Gel: 10+12+15%SDS-PAGE, Lysate: 40 µg;  
 Lane 1-2: Jurkat cells, human ovarian cancer tissue;  
 Primary antibody: 213622(KLF5 Antibody) at dilution 1/1700;  
 Secondary antibody: Goat anti rabbit IgG at 1/8000 dilution;  
 Exposure time: 20 seconds



# Product Description

Pioneering GTPase and Oncogene Product Development since 2010

---