

KLF4 RABBIT PAB

Cat.#: N225994

Product Name: Anti-KLF4 Rabbit pAb

Synonyms: Endothelial Kruppel like zinc finger protein; Epithelial zinc finger protein EZF; EZF; GKLF; Gut-enriched krueppel-like factor; KLF; KLF4; KLF4_HUMAN; Krueppel-like factor 4; Kruppel like factor 4; Epithelial zinc finger protein EZF; Gut enriched Krueppel like factor; Kruppel like factor 4 (gut).

UNIPROT ID: O43474

Background: KLF4 is a member of the erythroid Kruppel-like factor (EKLF) multigene family that is highly expressed in the differentiating layers of the epidermis. KLF4 plays a critical role in the differentiation of epithelial cells and is essential for normal gastric homeostasis and function as both a repressor and activator of transcription.

Immunogen: Recombinant protein of human KLF4

Applications: WB,IHC-F,IHC-P,ICC/IF,FC

Recommended Dilutions: WB: 1/500-1/1000 IHC: 1/50-1/100 IF: 1/50-1/200 FC: 1/50-1/100

Host Species: Rabbit

Clonality: Rabbit Polyclonal

Clone ID: -

MW: Calculated MW: 55 kDa; Observed MW: 55 kDa

Isotype: IgG

Purification: Affinity Purified

Species Reactivity: Human

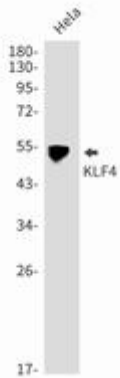
Conjugation: Unconjugated

Modification: Unmodified

Constituents: PBS (without Mg²⁺ and Ca²⁺), pH 7.3 containing 50% glycerol, 0.5% BSA and 0.02% sodium azide

Research Areas: Epigenetics and Nuclear Signaling

Storage & Shipping: Store at -20°C. Avoid repeated freezing and thawing



Western blot analysis of KLF4 in HeLa lysates using KLF4 antibody.