

## KLF4 RABBIT MAB

**Cat.#:** N263395

**Product Name:** Anti-KLF4 Rabbit Monoclonal Antibody

**Synonyms:** EZF; Zie; Gklf

**UNIPROT ID:** Q60793

**Background:** Transcription factor; can act both as activator and as repressor. Binds the 5'-CACCC-3' core sequence.

**Immunogen:** Recombinant protein of mouse KLF4

**Applications:** WB,IHC-P,IP

**Recommended Dilutions:** WB: 1/500-1/1000 IHC: 1/50-1/100 IP: 1/20

**Host Species:** Rabbit

**Clonality:** Rabbit Monoclonal

**Clone ID:** R03-218

**MW:** Calculated MW: 52 kDa; Observed MW: 52 kDa

**Isotype:** IgG

**Purification:** Affinity Purified

**Species Reactivity:** Human,Mouse,Hamster

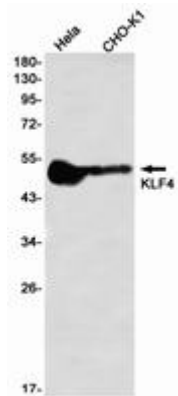
**Conjugation:** Unconjugated

**Modification:** Unmodified

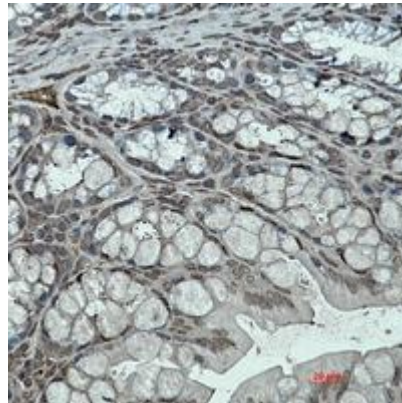
**Constituents:** PBS (without Mg<sup>2+</sup> and Ca<sup>2+</sup>), pH 7.3 containing 50% glycerol, 0.5% BSA and 0.02% sodium azide

**Research Areas:** Epigenetics and Nuclear Signaling

**Storage & Shipping:** Store at -20°C. Avoid repeated freezing and thawing



Western blot analysis of KLF4 in HeLa, CHO-K1 lysates using KLF4 antibody.



Immunohistochemistry analysis of paraffin-embedded mouse colon using KLF4 antibody. High-pressure and temperature Sodium Citrate pH 6.0 was used for antigen retrieval.