

## KLC2 RABBIT PAB

**Cat.#:** S219160

**Product Name:** Anti-KLC2 Rabbit Polyclonal Antibody

**Synonyms:**

**UNIPROT ID:** Q9H0B6 (Gene Accession - BC034373 )

**Background:** The protein encoded by this gene is a light chain of kinesin, a molecular motor responsible for moving vesicles and organelles along microtubules. Defects in this gene are a cause of spastic paraplegia, optic atrophy, and neuropathy (SPOAN) syndrome.

**Immunogen:** Fusion protein of human KLC2

**Applications:** ELISA, WB, IHC

**Recommended Dilutions:** IHC: 150-300;WB: 500-2000;ELISA: 5000-10000

**Host Species:** Rabbit

**Clonality:** Rabbit Polyclonal

**Isotype:** Immunogen-specific rabbit IgG

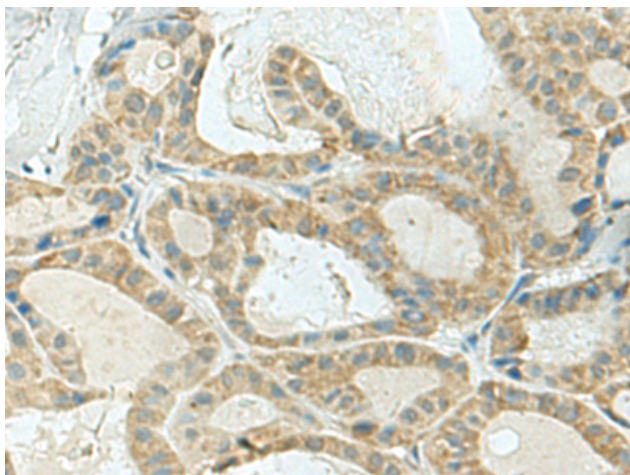
**Purification:** Antigen affinity purification

**Species Reactivity:** Human, Mouse

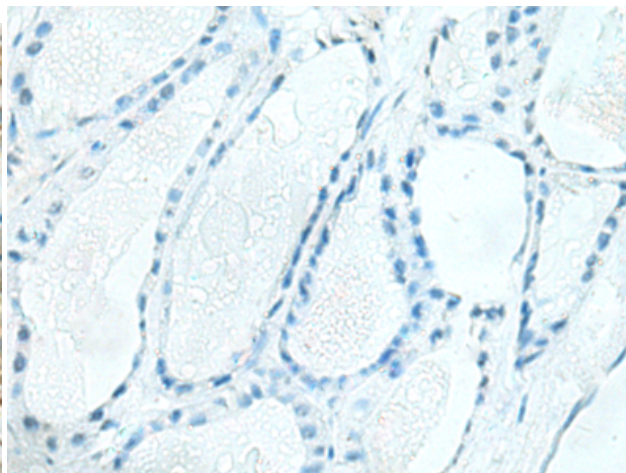
**Constituents:** PBS (without Mg<sup>2+</sup> and Ca<sup>2+</sup>), pH 7.4, 150 mM NaCl, 0.05% Sodium Azide and 40% glycerol

**Research Areas:** Signal Transduction

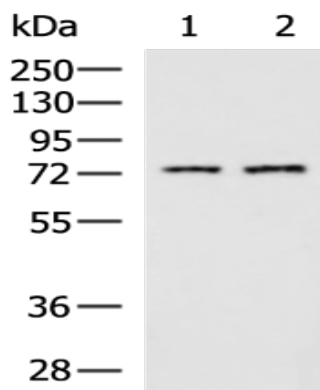
**Storage & Shipping:** Store at -20°C. Avoid repeated freezing and thawing



Immunohistochemistry analysis of paraffin embedded Human thyroid cancer tissue using 219160(KLC2 Antibody) at a dilution of 1/120(Cytoplasm).



In comparison with the IHC on the left, the same paraffin-embedded Human thyroid cancer tissue is first treated with the fusion protein and then with 219160(Anti-KLC2 Antibody) at dilution 1/120.



Gel: 8%SDS-PAGE, Lysate: 40 µg;  
 Lane 1-2: Human cerebrum tissue and Mouse brain tissue lysates;  
 Primary antibody: 219160(KLC2 Antibody) at dilution 1/800;  
 Secondary antibody: HRP-conjugated Goat anti rabbit IgG at 1/5000 dilution;  
 Exposure time: 10 seconds