

## KIR2DL5A RABBIT PAB

**Cat.#:** S222298

**Product Name:** Anti-KIR2DL5A Rabbit Polyclonal Antibody

**Synonyms:** CD158F; KIR2DL5; KIR2DL5.1; KIR2DL5.3

**UNIPROT ID:** Q8N109 (Gene Accession - NP\_065396 )

**Background:**

**Immunogen:** Synthetic peptide of human KIR2DL5A

**Applications:** ELISA, WB, IHC

**Recommended Dilutions:** IHC: although several ""framework"" genes are found in all haplotypes (KIR3DL3;

**Host Species:** Rabbit

**Clonality:** Rabbit Polyclonal

**Isotype:** Immunogen-specific rabbit IgG

**Purification:** Antigen affinity purification

**Species Reactivity:** Human

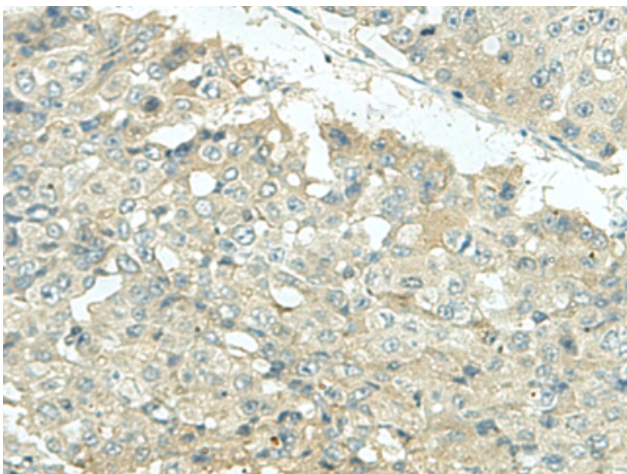
**Constituents:** PBS (without Mg<sup>2+</sup> and Ca<sup>2+</sup>), pH 7.4, 150 mM NaCl, 0.05% Sodium Azide and 40% glycerol

**Research Areas:** Immunology

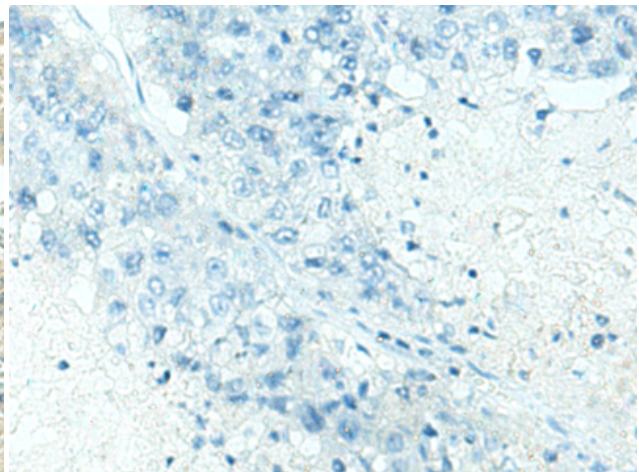
**Storage & Shipping:** Store at -20°C. Avoid repeated freezing and thawing

✘  
KIR3DL4

✘  
While KIR proteins with the short cytoplasmic domain lack the ITIM motif and instead associate with the TYRO protein tyrosine kinase binding protein to transduce activating signals. The ligands for several KIR proteins are subsets of HLA class I molecules; thus



Immunohistochemistry analysis of paraffin embedded Human liver cancer tissue using 222298(KIR2DL5A Antibody) at a dilution of 1/35(Cytoplasm).



In comparison with the IHC on the left, the same paraffin-embedded Human liver cancer tissue is first treated with the synthetic peptide and then with D264353(Anti-KIR2DL5A Antibody) at dilution 1/35.



# Product Description

Pioneering GTPase and Oncogene Product Development since 2010

---